

Maquet Variward

Product information

Maquet Variward is a modular room concept for intensive care units to address the clinical requirements of the unit while mitigating the anxiety and disorientation that ICU patients and their families often experience. The modular system meets the special requirements of this sensitive area regarding room layout, design and hygiene, all within a comfortable and stress-reducing environment.

Printed walls

Windows

Illuminated wall and ceiling elements

Wall elements

Doors



Like the Maquet Variop modular room concept for the OR, the Maquet Variward is characterised by short set-up times as well as quick and easy installation. Maquet Variward can also be adapted to meet the changing needs of the customer as well as future technologies whilst fulfilling the strict hygienic requirements of intensive care.

Maquet Variward is made of durable wall elements and offers comprehensive design options. The room system can thus be used to create a pleasant and stimulating environment which reduces the stress on patients and supports the healing process.

As experienced project partner, Getinge Hospital Solutions offers you complete concepts from a single source, tailored precisely to your technical and economic requirements, and flexibly adaptable to the constantly changing health-care environment.

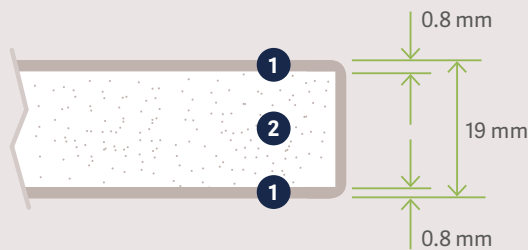
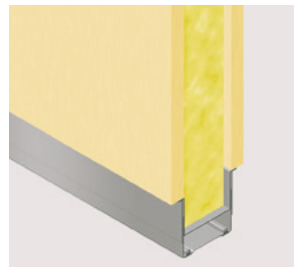
Maquet Variward – Contributing to a healing environment.

Benefits of Maquet Variward modular room concept:

- Modularity
- Quick and simple installation
- Flexibility
- Quality
- Design
- Expertise and bundled strengths of Getinge

Substructure

The special Maquet Variward substructure is invisible behind the wall elements. It consists of supports and catches made using galvanised torsion-free steel profiles. These are mounted on a floor rail which is levelled using setting screws and accommodates the wall elements and the joint profiles in a vibration-safe way. The wall elements can simply be clipped into the supports. The stability of the wall has been proven in accordance with DIN 4103.



- 1 **Decorative panel:** High-quality, robust laminate
- 2 **Core:** Premium chipboard

Wall materials

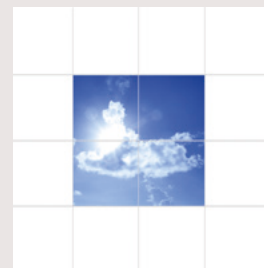
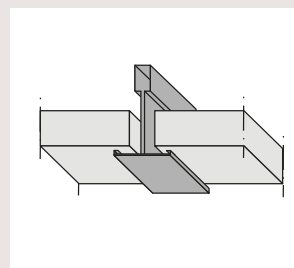
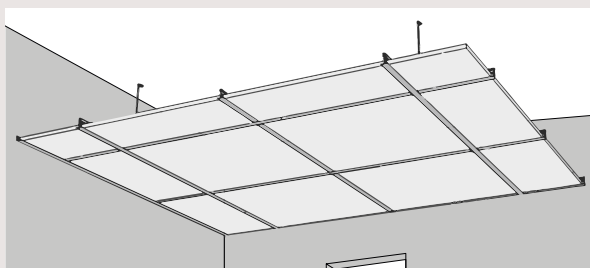
The wall elements are made from moisture-resistant bonded chipboard with robust laminate on both sides. The board is sealed with an edge surround of the same color. The walls may be individually designed using a variety of colors and wood decorations as well as the option for direct printing.

Additional materials and surfaces are available on request, e.g. foam core, anti-bacterial surface, magnetic properties.

Ceiling

The 600 x 600 mm ceiling cassettes are laid flush in a visible rail construction which can be quickly and simply installed and removed. The special composition means that the ceiling cassettes are moisture-resistant up to a relative air humidity of 100% and are thus washable. The cassettes also offer excellent

sound insulation properties and are thus an ideal solution for intensive care. In order to open up the space visually, individual ceiling elements may be printed and/or backlit. The room lighting is also integrated flexibly into the ceiling system. Various lighting modules may be flushed fitted or suspended.



	Width	Length / height	Thickness
Wall element	1,200 mm	relevant room height	19 mm
Ceiling element	600 mm	600 mm	19 mm

This document is intended to provide information to an international audience outside of the US.
Getinge Hospital Solutions GmbH · Kehler Str. 31 · 76437 Rastatt · Germany · +49 7222 932-0

www.getinge.com

GETINGE 