

- 01 Introduction
- 02 Benefits
- 03 Features
- 04 Security and setup
- 05 Specifications

Servo TwinView

Remote ventilator viewing



- 01 Introduction
A virtual twin of the physical ventilator
- 02 Benefits
- 03 Features
- 04 Security and setup
- 05 Specifications

Servo TwinView

A virtual twin of the physical ventilator



- 01 Introduction
A virtual twin of the physical ventilator
- 02 Benefits
- 03 Features
- 04 Security and setup
- 05 Specifications

Servo TwinView

A virtual twin of the physical ventilator

Servo TwinView provides virtual twins of connected Servo-u and Servo-n ventilators in near real-time. This allows medical teams to remotely view and analyze the information displayed on the ventilator interface, without entering the sensitive ICU environment.



- 01 Introduction
- 02 **Benefits**
 - Supporting the ICU staff
 - Second opinions and support
 - Rounding and handover
 - Training and onboarding
 - Planning and management
- 03 Features
- 04 Security and setup
- 05 Specifications

Servo TwinView

Supporting the ICU staff



- 01 Introduction
- 02 **Benefits**
 - Supporting the ICU staff**
 - Second opinions and support
 - Rounding and handover
 - Training and onboarding
 - Planning and management
- 03 Features
- 04 Security and setup
- 05 Specifications

Supporting the ICU staff

Improve day-to-day work and reduce patient disturbance.

Servo TwinView has been developed to support intensive care units, addressing issues such as staff shortages, stressful environments, and workflow efficiency, ultimately enhancing the ability to deliver better care.

Connecting your ventilators to Servo TwinView can help facilitate the effectiveness of daily work routines, freeing up time and clinical resources while minimizing unnecessary patient disturbance.

- Second opinions and support
- Rounding and handover
- Training and onboarding
- Planning and management



- 01 Introduction
- 02 **Benefits**
 - Supporting the ICU staff
 - Second opinions and support**
 - Rounding and handover
 - Training and onboarding
 - Planning and management
- 03 Features
- 04 Security and setup
- 05 Specifications

Supporting the ICU staff

Improve day-to-day work and reduce patient disturbance.

Servo TwinView has been developed to support intensive care units, addressing issues such as staff shortages, stressful environments, and workflow efficiency, ultimately enhancing the ability to deliver better care.

Connecting your ventilators to Servo TwinView can help facilitate the effectiveness of daily work routines, freeing up time and clinical resources while minimizing unnecessary patient disturbance.

- **Second opinions and support**
- Rounding and handover
- Training and onboarding
- Planning and management



Second opinions and support

By sharing near-real-time ventilator data, remotely located experts can support clinicians at the bedside, discussing treatments and providing detailed guidance. For example, instructing on Edi positioning and mode settings during NAVA ventilation.

- 01 Introduction
- 02 **Benefits**
 - Supporting the ICU staff
 - Second opinions and support
 - Rounding and handover**
 - Training and onboarding
 - Planning and management
- 03 Features
- 04 Security and setup
- 05 Specifications

Supporting the ICU staff

Improve day-to-day work and reduce patient disturbance.

Servo TwinView has been developed to support intensive care units, addressing issues such as staff shortages, stressful environments, and workflow efficiency, ultimately enhancing the ability to deliver better care.

Connecting your ventilators to Servo TwinView can help facilitate the effectiveness of daily work routines, freeing up time and clinical resources while minimizing unnecessary patient disturbance.

- Second opinions and support
- **Rounding and handover**
- Training and onboarding
- Planning and management



Rounding and handover

During the daily handover, Servo TwinView provides the ICU team with an extensive overview of the patients. Ventilator data is continuously updated, and clinicians can discuss information and plan treatments of critically ill patients without needing to enter the ICU rooms.

- 01 Introduction
- 02 **Benefits**
 - Supporting the ICU staff
 - Second opinions and support
 - Rounding and handover
 - Training and onboarding**
 - Planning and management
- 03 Features
- 04 Security and setup
- 05 Specifications

Supporting the ICU staff

Improve day-to-day work and reduce patient disturbance.

Servo TwinView has been developed to support intensive care units, addressing issues such as staff shortages, stressful environments, and workflow efficiency, ultimately enhancing the ability to deliver better care.

Connecting your ventilators to Servo TwinView can help facilitate the effectiveness of daily work routines, freeing up time and clinical resources while minimizing unnecessary patient disturbance.

- Second opinions and support
- Rounding and handover
- **Training and onboarding**
- Planning and management



Training and onboarding

Students and supervisors can follow procedures in real time without disturbing patients. Real patient data contributes to a deeper understanding, and large groups can participate in discussions while familiarizing themselves with the ventilator user interface.

- 01 Introduction
- 02 **Benefits**
 - Supporting the ICU staff
 - Second opinions and support
 - Rounding and handover
 - Training and onboarding
 - Planning and management**
- 03 Features
- 04 Security and setup
- 05 Specifications

Supporting the ICU staff

Improve day-to-day work and reduce patient disturbance.

Servo TwinView has been developed to support intensive care units, addressing issues such as staff shortages, stressful environments, and workflow efficiency, ultimately enhancing the ability to deliver better care.

Connecting your ventilators to Servo TwinView can help facilitate the effectiveness of daily work routines, freeing up time and clinical resources while minimizing unnecessary patient disturbance.

- Second opinions and support
- Rounding and handover
- Training and onboarding
- **Planning and management**



Planning and management

Using the List View, ICU coordinators will get an overview of current ventilator availability, location and status, as well as patients soon to be released – supporting them in the overall planning of ICU procedures.

01 Introduction

02 Benefits

03 **Features**

Intuitive interface
and interaction

List View

Twin View

Dashboard View

User-friendly
solution

Smartphone View

Share Ventilator

Set Location

04 Security and setup

05 Specifications

Servo TwinView

Intuitive interface and interaction



- 01 Introduction
- 02 Benefits
- 03 Features
 - Intuitive interface and interaction
 - List View
 - Twin View
 - Dashboard View
 - User-friendly solution
 - Smartphone View
 - Share Ventilator
 - Set Location
- 04 Security and setup
- 05 Specifications

Intuitive interface and interaction

Get a comprehensive overview or analyze detailed ventilator data

The interface is designed to correspond with the actual ventilator while making it easy to switch between different views and tasks. Three primary views are available:

The **List View** presents a list of all connected ventilators, from where you can choose to view single ventilators in the **Twin View**. Finally, the **Dashboard View** shows up to six ventilators simultaneously.

- List View
- Twin View
- Dashboard View



- 01 Introduction
- 02 Benefits
- 03 Features
 - Intuitive interface and interaction
 - List View
 - Twin View
 - Dashboard View
 - User-friendly solution
 - Smartphone View
 - Share Ventilator
 - Set Location
- 04 Security and setup
- 05 Specifications

Intuitive interface and interaction

Get a comprehensive overview or analyze detailed ventilator data

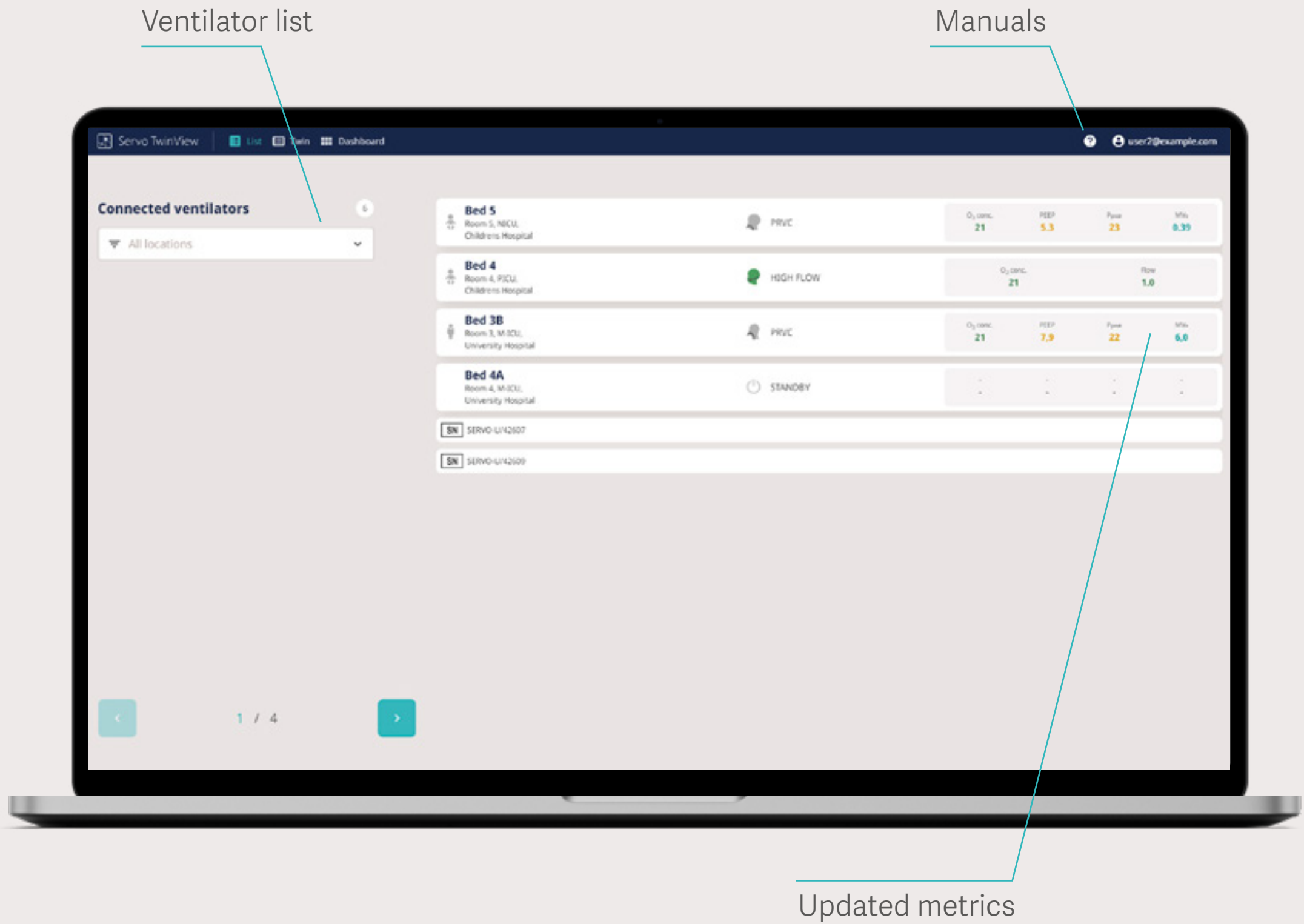
The interface is designed to correspond with the actual ventilator while making it easy to switch between different views and tasks. Three primary views are available:

The **List View** presents a list of all connected ventilators, from where you can choose to view single ventilators in the **Twin View**. Finally, the **Dashboard View** shows up to six ventilators simultaneously.

→ List View

→ Twin View

→ Dashboard View



All connected ventilator systems are presented in an easy-to-use list, displaying their status, location, availability, ventilator type and mode, and a subset of clinical metrics. The location value can be a bed or room number, and the patient category is shown with a symbol.

- 01 Introduction
- 02 Benefits
- 03 Features
 - Intuitive interface and interaction
 - List View
 - Twin View
 - Dashboard View
 - User-friendly solution
 - Smartphone View
 - Share Ventilator
 - Set Location
- 04 Security and setup
- 05 Specifications

Intuitive interface and interaction

Get a comprehensive overview or analyze detailed ventilator data

The interface is designed to correspond with the actual ventilator while making it easy to switch between different views and tasks. Three primary views are available:

The **List View** presents a list of all connected ventilators, from where you can choose to view single ventilators in the **Twin View**. Finally, the **Dashboard View** shows up to six ventilators simultaneously.

- List View
- **Twin View**
- Dashboard View



The Twin View presents a near-real-time twin of the user interface of the selected ventilator system. Users can access functions to view basic numerical values, current alarms, and other information, providing an enhanced understanding of the patient’s status.

- 01 Introduction
- 02 Benefits
- 03 Features
 - Intuitive interface and interaction
 - List View
 - Twin View
 - Dashboard View**
 - User-friendly solution
 - Smartphone View
 - Share Ventilator
 - Set Location
- 04 Security and setup
- 05 Specifications

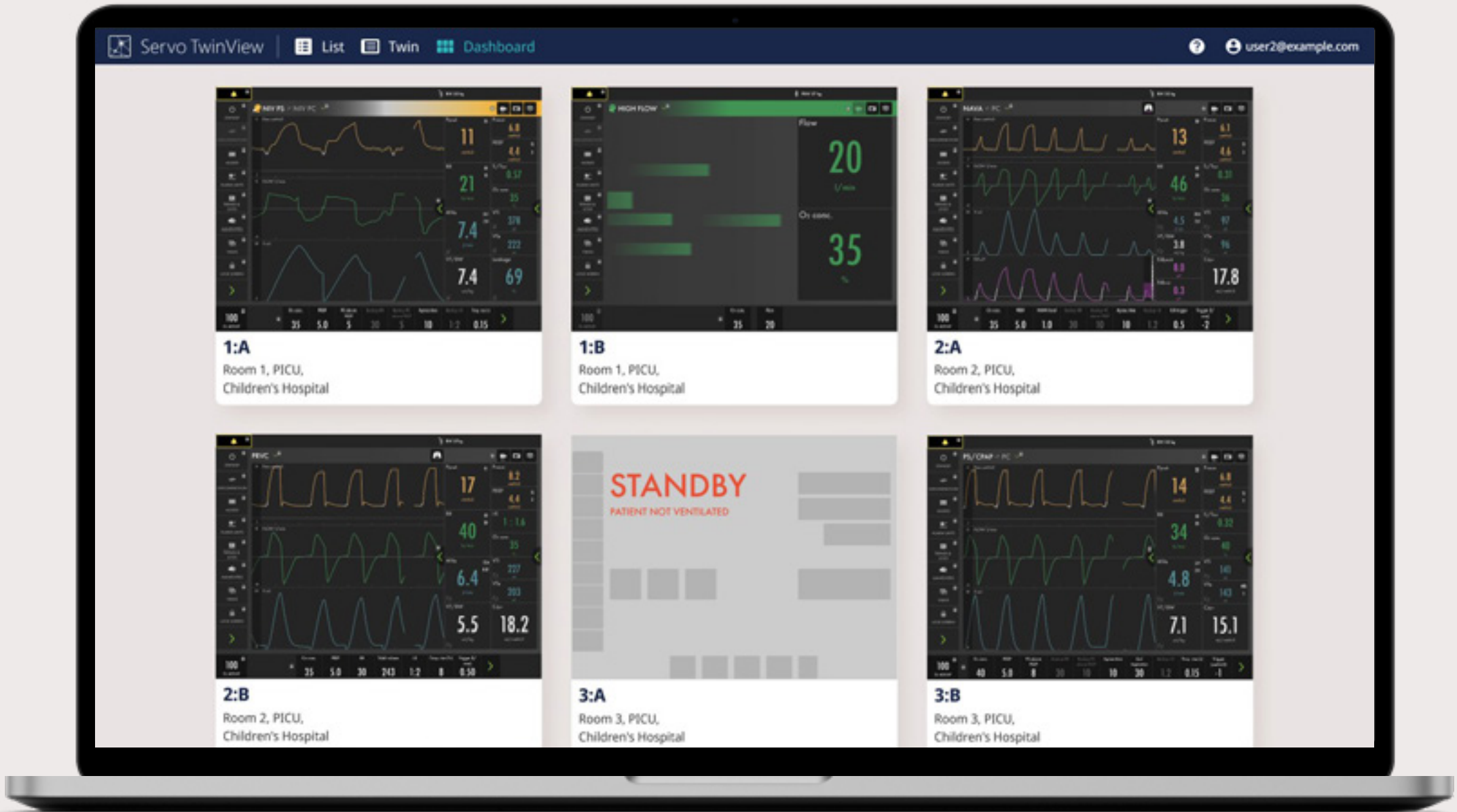
Intuitive interface and interaction

Get a comprehensive overview or analyze detailed ventilator data

The interface is designed to correspond with the actual ventilator while making it easy to switch between different views and tasks. Three primary views are available:

The **List View** presents a list of all connected ventilators, from where you can choose to view single ventilators in the **Twin View**. Finally, the **Dashboard View** shows up to six ventilators simultaneously.

- List View
- Twin View
- **Dashboard View**



The Dashboard View displays up to six ventilators simultaneously, offering a comprehensive patient view and facilitating easy switching between different beds. The location is shown for each ventilator system, and the filters set in the List View also apply to the dashboard.

- 01 Introduction
- 02 Benefits
- 03 **Features**
 - Intuitive interface and interaction
 - List View
 - Twin View
 - Dashboard View
 - User-friendly solution**
 - Smartphone View
 - Share Ventilator
 - Set Location
- 04 Security and setup
- 05 Specifications

User-friendly solution

Access on your choice of device connected to the hospital network.

Servo TwinView is a web-based application and can be accessed on viewing devices, including computers and smartphones, connected to the hospital's IT network. This allows staff to view the ventilator information from anywhere within the network.

- Smartphone View
- Share Ventilator
- Set Location



- 01 Introduction
- 02 Benefits
- 03 Features
 - Intuitive interface and interaction
 - List View
 - Twin View
 - Dashboard View
 - User-friendly solution
 - Smartphone View**
 - Share Ventilator
 - Set Location
- 04 Security and setup
- 05 Specifications

User-friendly solution

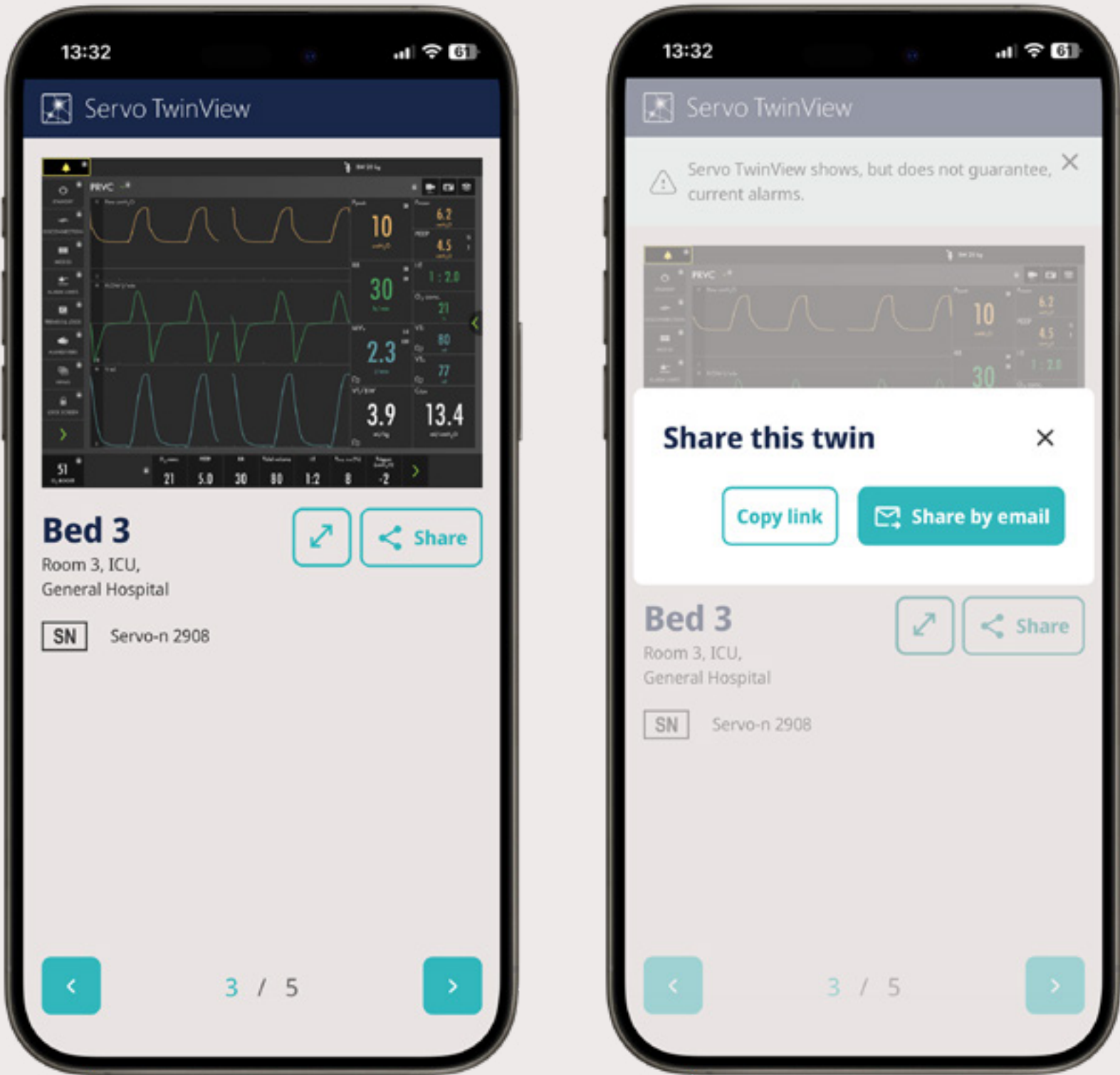
Access on your choice of device connected to the hospital network.

Servo TwinView is a web-based application and can be accessed on viewing devices, including computers and smartphones, connected to the hospital’s IT network. This allows staff to view the ventilator information from anywhere within the network.

→ **Smartphone View**

→ Share Ventilator

→ Set Location



Smartphone View

Data available in the List and Twin View is adapted to the mobile interface.

- 01 Introduction
- 02 Benefits
- 03 **Features**
 - Intuitive interface and interaction
 - List View
 - Twin View
 - Dashboard View
 - User-friendly solution
 - Smartphone View
 - Share Ventilator**
 - Set Location
- 04 Security and setup
- 05 Specifications

User-friendly solution

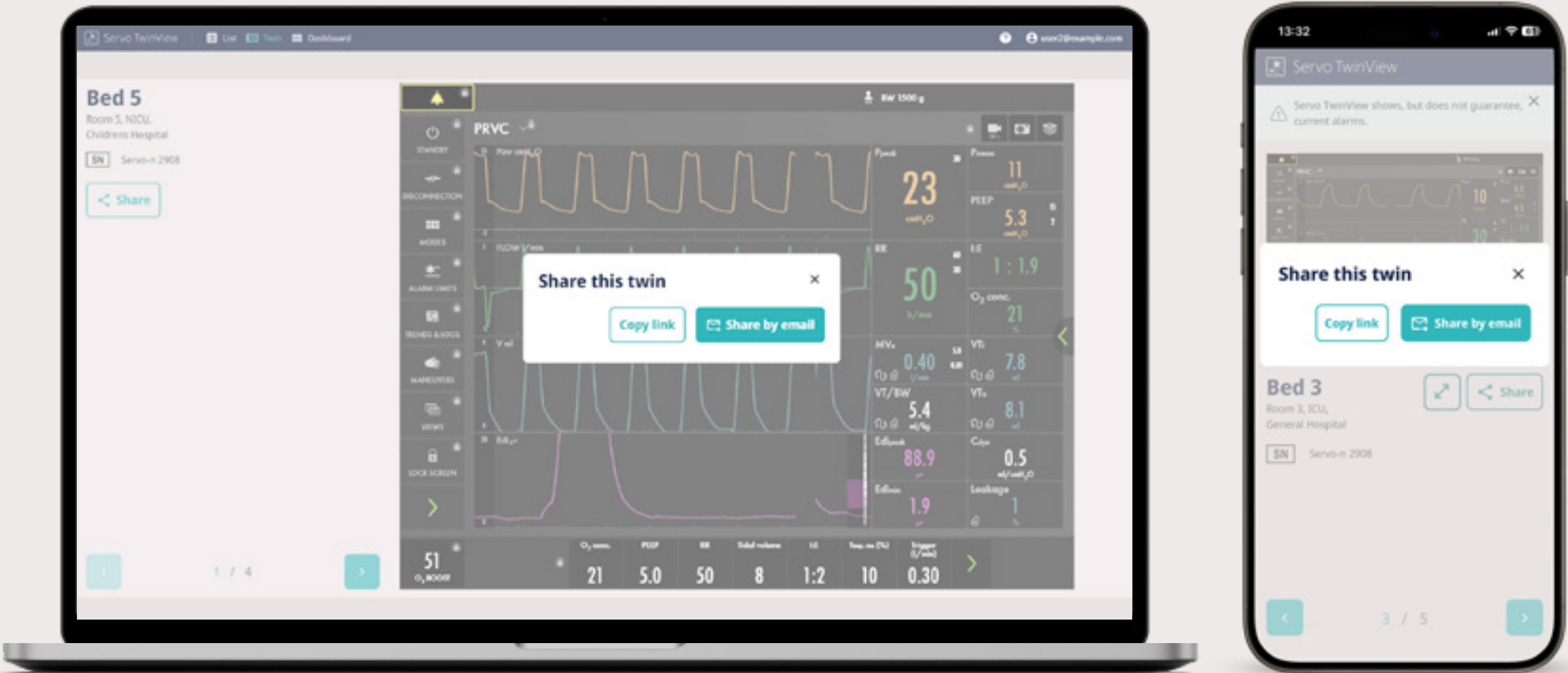
Access on your choice of device connected to the hospital network.

Servo TwinView is a web-based application and can be accessed on viewing devices, including computers and smartphones, connected to the hospital’s IT network. This allows staff to view the ventilator information from anywhere within the network.

→ **Smartphone View**

→ **Share Ventilator**

→ **Set Location**



Sharing Ventilator

The ventilator data can easily be shared with colleagues by copying a link or sending an e-mail.

- 01 Introduction
- 02 Benefits
- 03 **Features**
 - Intuitive interface and interaction
 - List View
 - Twin View
 - Dashboard View
 - User-friendly solution
 - Smartphone View
 - Share Ventilator
 - Set Location**
- 04 Security and setup
- 05 Specifications

User-friendly solution

Access on your choice of device connected to the hospital network.

Servo TwinView is a web-based application and can be accessed on viewing devices, including computers and smartphones, connected to the hospital’s IT network. This allows staff to view the ventilator information from anywhere within the network.

→ Smartphone View

→ Share Ventilator

→ **Set Location**

Set Location

To access and view data in Servo TwinView, locations must be set for the connected ventilators. Usually, this is done by linking each ventilator to a specific bed in the ICU.



- 01 Introduction
- 02 Benefits
- 03 Features
- 04 **Security and setup**
 - Security measures in the system
 - System overview
- 05 Specifications

Servo TwinView

Secure operation



- 01 Introduction
- 02 Benefits
- 03 Features
- 04 **Security and setup**
 - Security measures in the system
 - System overview
- 05 Specifications

Secure operation

Security measures in the system.

All data is managed within your hospital network, and connections to the system are encrypted. Participating device connections are established and securely authenticated utilizing the existing hospital network infrastructure.

The authenticity and integrity of software installations or updates are ensured through cryptographic signing of software packages. Remote assistance is a integrated solution that supports our customers in time of need. Access is made possible only with local administrative activation during the joint remote assistance session.

For more information, see [Getinge Connect Control Center and applications secure operation guidelines.](#)



- 01 Introduction
- 02 Benefits
- 03 Features
- 04 **Security and setup**
 - Security measures in the system
 - System overview**
- 05 Specifications

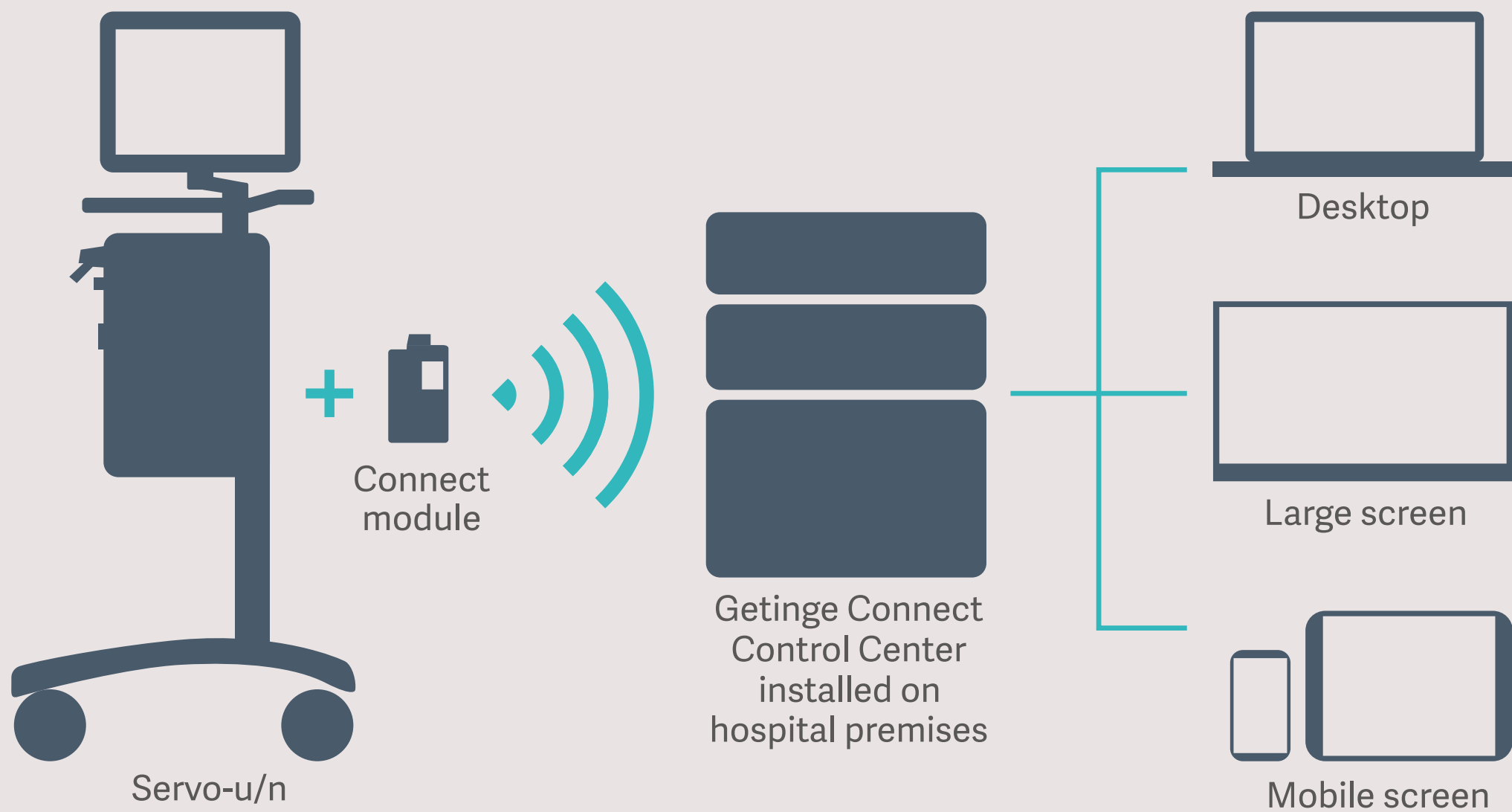
Secure operation

System overview.

The data is transferred from the ventilator system to the Getinge Connect Control Center through Wi-Fi. Subsequently, it is relayed to the Servo TwinView application and displayed on the selected viewing devices.

The Getinge Connect Control Center operates on a local sever established by healthcare personnel. The Getinge Connect Control Center provides a runtime environment and common services for applications such as Servo TwinView.

For more information, contact your local Getinge representative.



Solution overview

- Servo ventilators connectivity enabled
- Servo TwinView and Getinge Connect Control Center installed on hospital network
- Corresponding location/patient bed with ventilator and Servo TwinView application
- Access to Servo TwinView using hospital SSO (single sign-on)

- 01 Introduction
- 02 Benefits
- 03 Features
- 04 Security and setup
- 05 **Specifications**
 - Technical
 - Specifications

Servo TwinView

Technical Data



- 01 Introduction
- 02 Benefits
- 03 Features
- 04 Security and setup
- 05 **Specifications**
 - Technical Specifications

Technical Data

System requirements	
Platform	<p>Getinge Connect Control Center.</p> <p>Servo TwinView is installed in Getinge Connect Control Center. For more support contact your local Getinge representative</p>
Connectivity node	<p>Getinge Connect module P10.</p> <p>A connectivity node must be installed on each ventilator system. For more information, see the Getinge Connect module P10 user’s manual.</p>
Network connection	Connection to the healthcare organization’s network.
Recommended viewing devices	<ul style="list-style-type: none">• Computer• Smartphone• Tablet
Recommended web browsers (latest versions)	<ul style="list-style-type: none">• Google Chrome• Microsoft Edge• Mozilla Firefox• Safari

Servo TwinView specifications	
Application language	<p>Application language is set by your local service and support in Getinge Connect Control Center.</p> <p>Application language can be set to:</p> <div><ul style="list-style-type: none">• Czech• Danish• Dutch• English• Estonian• Finnish• French• German• Greek• Hungarian<ul style="list-style-type: none">• Italian• Norwegian• Polish• Portuguese• Romanian• Slovak• Spanish• Swedish</div>
Supported ventilator systems	<ul style="list-style-type: none">• Servo-u ventilator system v4.6• Servo-n ventilator system v4.6
Security standard	IEC 81001-5-1

Supported ventilator systems functions	
Views	<ul style="list-style-type: none">• Advanced view• Basic view <p>All views are not available in all modes and therapies. For more information, see the user’s manual of the ventilator system.</p>
Patient categories	<ul style="list-style-type: none">• Adult• Pediatric• Neonatal
Modes and therapies	All modes and therapies of the supported ventilator systems.
Tools	<ul style="list-style-type: none">• Automode• CO₂ analyzer• Edi monitoring• P0.1

- 01 Introduction
- 02 Benefits
- 03 Features
- 04 Security and setup
- 05 Specifications

This information is intended for an international audience outside the US.

This information is aimed exclusively at healthcare professionals or other professional audiences and are for informational purposes only, is not exhaustive and therefore should not be relied upon as a replacement of the Instructions for Use, service manual or medical advice. Getinge shall bear no responsibility or liability for any action or omission of any party based upon this material, and reliance is solely at the user's risk.

Any therapy, solution or product mentioned might not be available or allowed in your country. Information may not be copied or used, in whole or in part, without written permission by Getinge.

Views, opinions, and assertions expressed are strictly those of the interviewed and do not necessarily reflect or represent the views of Getinge.

Servo TwinView may be pending regulatory approvals to be marketed in your country. Contact your Getinge representative for more information.

Manufacturer: Maquet Critical Care AB · 171 54 Solna, Sweden · Phone: +46 (0)10-335 00 00 · info@getinge.com

© 2025 Getinge · Getinge and **GETINGE**  are trademarks or registered trademarks of Getinge AB, its subsidiaries or affiliates · MX-9298 · All rights reserved
www.getinge.com

