

Hospital Transformational Partnerships (HTP)

Hospital Needs and Challenges

Better Outcomes at Lower Costs



HEALTHCARE TRENDS

Aging Population
Improved access
Personalized Care
Technology Innovation

Lack of clinical staff

Virtual Care
Artificial Intelligence
Robotics

Increasing importance
of patient experience



IMPACT IN HOSPITALS

Growing
Costs

Staff
Shortage

Digital
Health

Patient
role



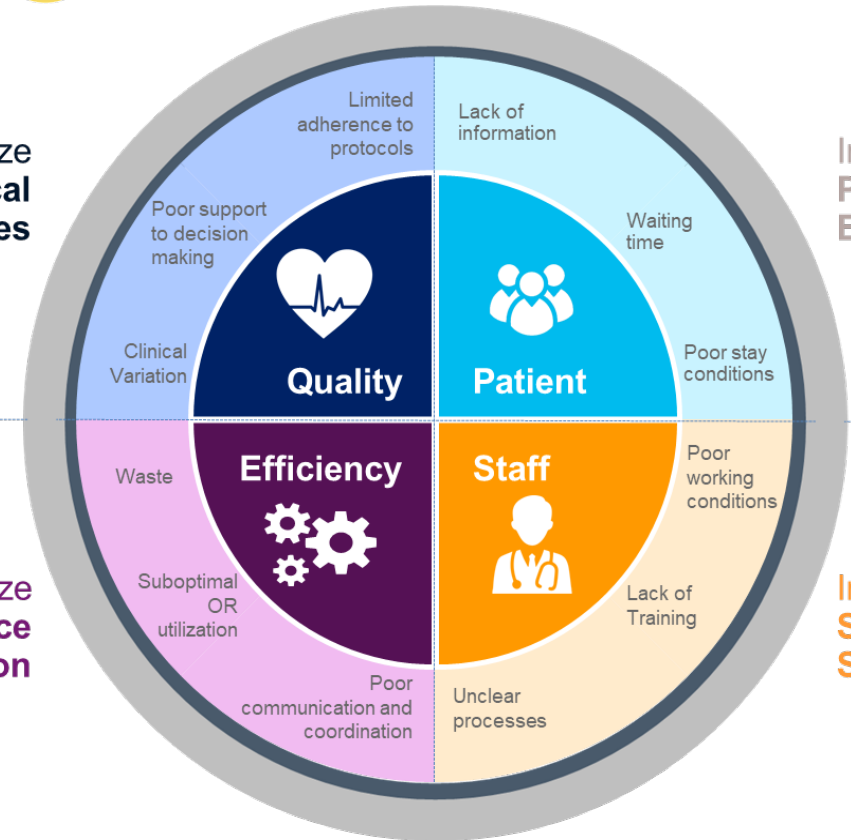
HOSPITALS NEEDS AND CHALLENGES

Optimize
Clinical
Outcomes

Improve
Patient
Experience

Optimize
Resource
Utilization

Increase
Staff
Satisfaction



Getinge Hospital Transformational Partnerships (HTP)

Working Together to Improve Outcomes



Based on client needs and priorities, we **partner with hospitals** to jointly **optimize their outcomes** by **transforming the way they work**

Assessment of CSSD & OR

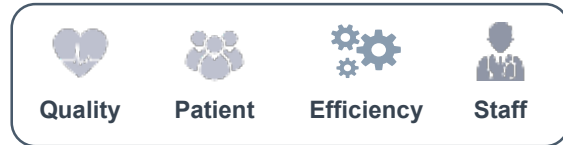
Identify areas for improvement, estimate the impact and define steps to realise improvements

Our proposed approach is guided by the following 4 principles:



Hospital Global Challenges

Room for Improvement in all four areas



KAROLINSKA
UNIVERSITY HOSPITAL



25% of CSSD cost exceeded budget and increasing

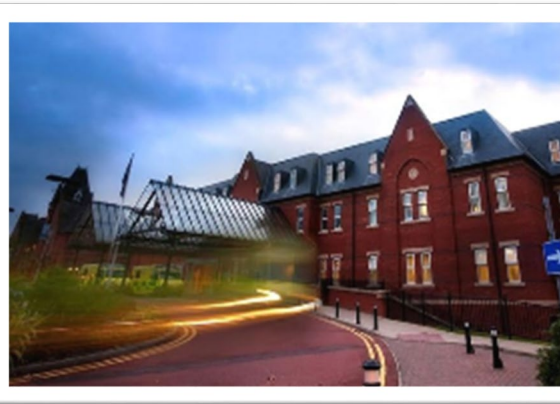


1 out of 10 deliveries from CSSD to OR incorrect and/or late



15% of overtime in the CSSD and 12% of staff turnover

NHS Wrightington,
Wigan and Leigh
NHS Foundation Trust

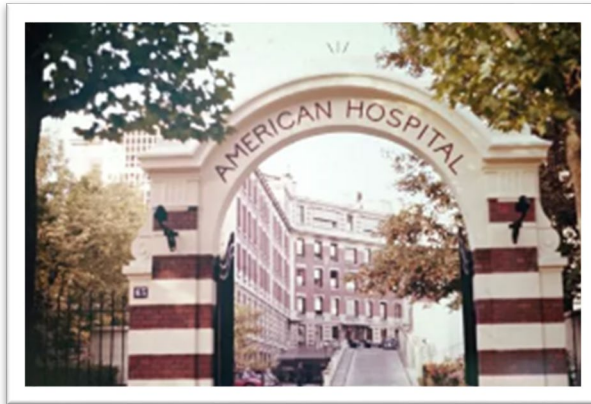


15% of patients waiting more than 4 hours in A&E vs 5% target



45%-60% of OR utilization with more than 99% of elective surgeries

American Hospital of Paris



60% real OR utilization vs 85% target



10%-15% of OR available time wasted on Patients turnover

Karolinska University Hospital

Client Overview



- Ranked in **Top 10 World's Best Hospitals** (Newsweek)
- Leader in clinical innovation together with **Karolinska Institute**
- One hospital in two locations: **Solna** and **Huddinge**

Key Figures

1,340

Beds

15,000

Employees

59

Operating Rooms

1.35 M

Patient visits / year

+ 60,000

Surgeries / year

+150

CSSD Staff

+ 140,000

Instrument's Trays / year

+10

Years T-DOC Experience

Karolinska University Hospital - HTP Reference Case

Performance Improvement in the CSSDs of Top Europe Hospital



PROJECT OBJECTIVES



Increase
Efficiency



Enhance **Quality**
of Service



Improve **Working**
Environment

METHODOLOGY AND TIMELINE

1



Understand
Needs
& Priorities



2



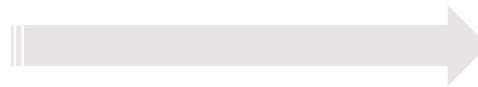
Analyze
Areas for
Improvement



3

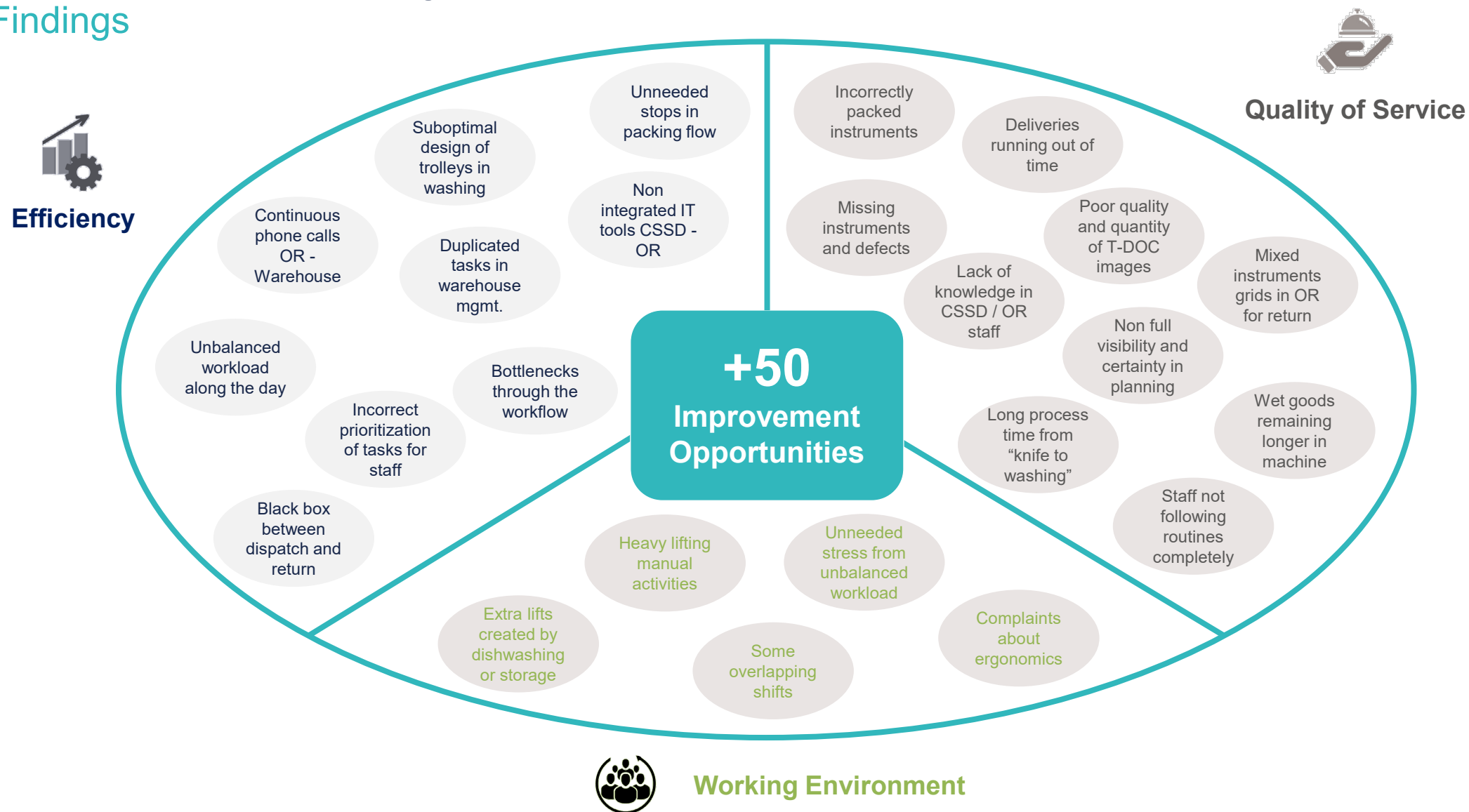


Implement
Changes &
Measure



Karolinska University Hospital

Findings



Karolinska University Hospital

Implemented Changes



Processes

Processes redesign*

Workflow transparency

Co-ordination with OR department

** Elimination of bottlenecks, double handling and phone calls*



Digital Solutions (T-DOC)

Reconfiguration of T-DOC

Implementation of advanced functionality

Improved integration with OR planning system

INTEGRATED APPROACH



People

Tasks prioritization and balance work load

Training on the new processes and the use of T-DOC

Reduction of heavy lifting



Equipment and Instruments


Redesign of trolleys

Instruments marking

Installation of new equipment

Karolinska University Hospital

Results Achieved

		BASELINE		RESULTS ACHIEVED	IMPROVEMENT
 Efficiency	Trays per hour & FTE	59 Trays	➡	87 Trays	+47%
	Production Cost per Tray	\$85.34	➡	\$55.47	-35%
 Quality of Service	Deliveries on- time and correct	90 %	➡	99.8 %	+9.8pp
 Working Environment	Staff Turnover	12.2 %	➡	4.8 %	-7.4pp
	Overtime	15 %	➡	2.3 %	-85%



We are looking for hospitals to partner with us
Interested?