



# Maquet Yuno II Mobile Operating Table

Pave the way for high-class techniques





# Improve outcomes

## With advanced surgical workflows

Maquet Yuno II is designed to provide the extensive, precise, and simple configurability needed for sophisticated surgical techniques in orthopaedics, traumatology, and neurology.

Getinge is built on a genuine compassion for people's health, safety, and wellbeing. Founded in 1904 with roots dating back to 1838, Getinge has grown organically and through acquisitions to become a global market leader. Our portfolio offers solutions and support throughout the clinical pathway, and features well-known product brands, such as Maquet.

Ours is a legacy of trust and an ongoing commitment to advancing medical technology. We maintain close clinical partnerships to address real-world clinical needs, helping you protect patients, proactively avoid complications, and prevent common causes of escalating healthcare costs.

Developed in line with surgeon's requirements, the Maquet Yuno II is designed to provide the positioning and access required to facilitate optimum results. The table can be configured for any discipline, increasing your options and maximising the functionality of your OR.

Easy handling ensures that Maquet Yuno II will simplify positioning for even the most complex techniques to help you focus on what's most important: your patients.





# Maquet Yuno II

## Your foundation for the future

The increasing prevalence of minimally invasive techniques in orthopaedics and neurology requires a strong, versatile table that effectively accommodates complex positioning and supports intraoperative imaging. Additionally, hospitals need a table that is easy and flexible to set up and handle in unpredictable trauma cases, guaranteeing fast help for the patient, day or night.

### The right choice for minimally invasive techniques

Minimally invasive surgery (MIS) can improve patient outcomes and save costs. Smaller incisions are less traumatic for the patient, reducing blood loss and minimising the risk of infection, potentially leading to faster recovery and shorter hospital stays. As MIS

becomes the standard of care, modern tables need to offer the correct positioning angles for a wide variety of procedures, from hip arthroscopy to tibia nailing.

The versatile components of Maquet Yuno II enable surgical teams and their patients to benefit from MIS by supporting a variety of positions for patients of various sizes.

Some MIS procedures require complex intraoperative patient movement, such as the direct anterior approach to hip replacements. Maquet Yuno II features a well-designed series of accessories that slide and rotate smoothly as needed during the procedure, and lock securely to prevent patient injury through inadvertent movement.

### Aiming to maximise investment

All hospitals are facing the cost pressure of doing more, doing it better, and doing it safely. That's why Maquet Yuno II is designed for universal compatibility with our existing accessories.

The wide range of positioning options and radiolucent accessories make the Maquet Yuno II Table an excellent choice for the precise disciplines of orthopaedics, traumatology, and neurosurgery. But the table is also flexible enough to be used as a universal table, extending the functionality of your OR.

Compatibility with our existing surgical accessories maximises your existing investment, reduces your upfront costs, and minimises the need for training.

An operating table is the foundation of the OR. Growing cost pressures require investments in safe and flexible operating tables that can be universally used in conventional or minimally invasive procedures.

The traction bar with ball joint mimics the natural motion of the hip, giving surgeons the full range of motion needed for optimal site access. Radiolucent carbon fibre accessories improve intraoperative diagnostics that are critical to verifying the correct repositioning of the skeletal structure.

### Ready when you are

When trauma patients arrive in your emergency department, there's no time to lose. Night or day, your OR must be ready. With the flexible Maquet Yuno II Operating Table, it's easy to quickly configure the table to meet the needs of the procedure and surgeon, even with limited staff on call.





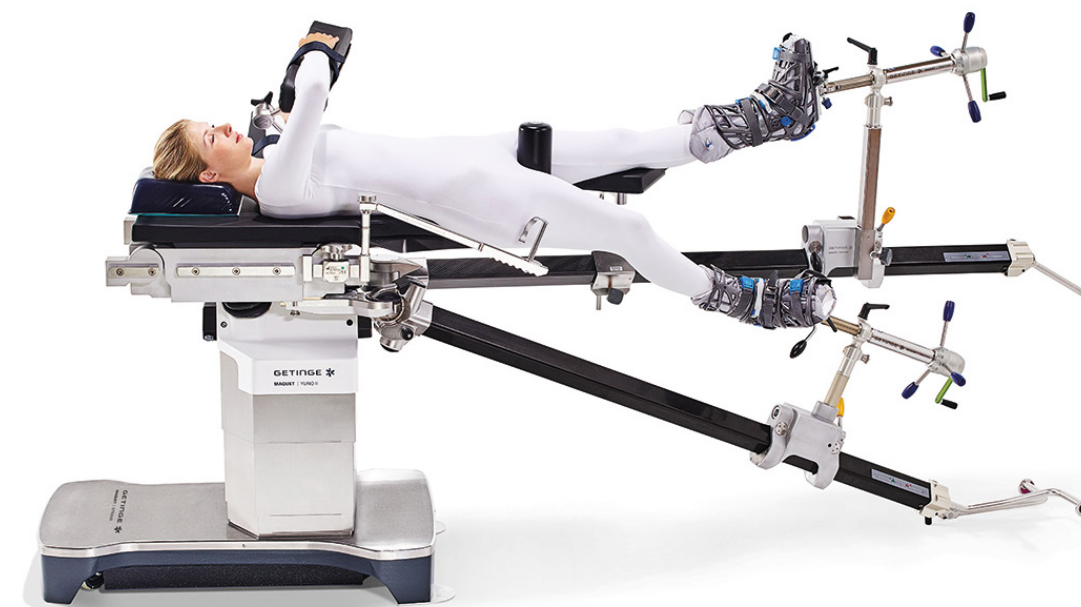
# Simplifying DAA to total hip replacement

**The minimally invasive direct anterior approach (DAA) to total hip replacement may reduce trauma and minimise pain. Because patients can begin rehabilitation faster, they spend less time in the hospital and are able to resume their normal lives.**

There are different approaches to hip joint replacement. Besides the conventional lateral and posterior approaches, the direct anterior approach is a minimally invasive technique that does not require detaching or cutting the patient's muscles to access the joint. Keeping the muscular structure intact minimises the risk of hip dislocation and can reduce the recovery and rehabilitation time.

This may lead to shorter hospital stays and cost-saving potentials for the hospital.

However, the direct anterior approach requires a complex course of leg movements throughout the procedure. Maquet Yuno II was designed to provide smooth combinations of leg rotation, abduction, adduction, and height adjustments to secure surgical site access while minimising ergonomic strain for the surgical team. The traction bar with ball joint mimics the smooth multidirectional movement of the hip itself. It is easy to operate, flexible to position, and securely locked to prevent overextension.



## Simple set-up so you can focus on the patient

Surgeons can spend less time adjusting the table and more time focusing on the patient with Maquet Yuno II. The screw tension device with slider and hand gear makes it easy to adjust traction levels. Larger adjustments can be made by sliding the device to the end of the bar, while the green handle allows fine tuning for precise and secure patient positioning.



## Precise leg rotations can prevent injuries

The star-shaped handle allows the leg to be easily rotated into the correct position at any time during the procedure. A degree indicator identifies the exact position of the limb to ensure accuracy. The handle automatically locks into place to prevent injury from human error.



## Smart design improves workflows

Control units are located at the end of the traction bars, allowing full control even after the table is fully draped. Positioning the control units away from the surgical site prevents overcrowding near the surgeon, streamlining workflows. An automatic lock function engages when the traction bar with ball joint is released, preventing injury caused by dropping the extension device.



## Quality imaging improves outcomes

Intraoperative imaging plays a significant role in the success and safety of a procedure. As the traction bars of Maquet Yuno II are made of carbon fibre, they allow for clear imaging with a C-arm. This gives surgeons the opportunity to check the positioning of the prosthesis and make any necessary adjustments while the patient is still in the OR.

## Maximising traction for hip arthroscopy

Hip arthroscopy (hip scope) is a minimally invasive technique that has the potential to improve patient outcomes by minimising pain, reducing the risk of infection, and accelerating the rehabilitation timeline. Hip scope procedures repair damage to the labrum, articular cartilage, or soft tissues surrounding the joint, postponing arthritis or delaying the need for a full hip replacement.

In order to gain proper access to the tissue, the femoral head must be pulled out of the acetabulum under maximum traction. Maquet Yuno II is designed to enable a strong traction of up to 80 kg in the most comfortable way for the surgical team. It offers the flexibility needed to handle a patient population of diverse sizes, preventing manual strain on the scrub nurse.

**Ventral capsule relief increases patient safety:** The long vertical adjustment allows clinical staff to lift the patient's leg to an angle that relieves the ventral capsule during the maximal traction of hip scope procedures.

**Simplified workflow:** Using the slider, the scrub nurse can ease traction in one smooth motion simply by supporting the patient's knee and pushing the screw tension device towards the table.



Carbon fibre bars improve intraoperative imaging



Higher table settings improve ergonomics for the surgeon

## Improving imaging access for pelvic fractures

Traumatic pelvic fractures often cause extensive bleeding and organ injuries that require urgent treatment and clear intraoperative imaging. With Maquet Yuno II, the radiolucent elements can be quickly set up to reduce the time to treatment, a critical factor in survival rates for traumatic pelvic injuries.

**Better image quality improves assessment:** With a carbon fibre sacral rest, a fully radiolucent pelvic area, and carbon fibre traction bars, there is nothing to interfere with the quality of intraoperative imaging. Surgeons can quickly assess the patient's condition and immediately begin treatment, all in the same room.



Flexible positioning in supine or prone position

## Improving ergonomics for femur fracture repair

The longest and strongest bone in the body, the femur, requires a tremendous amount of force to set fractures. Ergonomic positioning for the surgeon and accessibility of intraoperative imaging are of equal importance for a successful patient outcome.

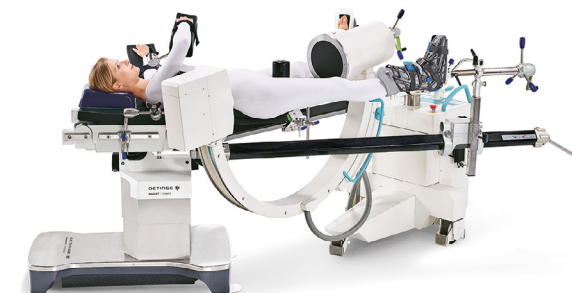
With Maquet Yuno II, surgical teams can easily position the table in the ideal configuration for both surgeon and patient. The smart design of the carbon fibre traction bars reduces the complexity of femur setups and improves the surgical workflow.

**Highest table setting improves ergonomic conditions:** With the highest table position on the market, surgeons can place the table at a comfortable height to reduce back spasms and minimise fatigue from bending and twisting.

**Imaging quality:** Carbon fibre traction bars give surgeons the flexibility to check results immediately using a C-arm. This saves time and money by eliminating the need for separate follow-up imaging, and allows surgeons to make necessary adjustments without delay.



Long vertical adjustment offers ventral capsule relief



Sliding function simplifies workflow

## Enhancing imaging possibilities for shoulder surgery

When it comes to the complex demands of shoulder surgery, a large imaging window is essential. Maquet Yuno II contours perfectly to the patient's body to comfortably accommodate the full range of shoulder and upper arm procedures. An accessible and radiolucent design enhances intraoperative imaging.

**Better images for better outcomes:** Clear images help surgeons assess the proper positioning of bones, particularly in the treatment of clavicular or humeroradial joint head fractures.



Maquet Yuno II with radiolucent back plate 143.34 AC



# Maquet Sensor Drive

Optimised patient transport

### Easy OR table maneuvering

Maquet Sensor Drive is an infrared wireless control unit for the auto drive function of Maquet Yuno II, Maquet Alphamaxx and Maquet Meera mobile OR tables. Rotation of the handle engages the drive and regulates the speed of the OR table by the degree of rotation, like a motorcycle throttle. Rotating the handle forward and backward will release the table brakes and move the table in the desired direction. This is designed to improve safety and handling and increase staff comfort.

### Optimised patient transport

Effective patient transport requires staff to safely maneuver OR tables in tight spaces and crowded hospital corridors. Maquet Sensor Drive precisely regulates speed and improves maneuverability, reducing the risk of collision with minimal staff effort.



### Simple handling

The handle is mounted to the OR table side rail, generally on the head rest. It enables the OR team and nursing staff to use just one hand to operate the autodrive and steer at the same time. This leaves one hand free to help patients in critical situations.

### Multi-functional application

A single Maquet Sensor Drive can be used with several tables. Simply enter a key code to pair the control unit with the selected OR table for immediate use. In addition, many existing Maquet Alphamaxx OR tables which are equipped with a fast autodrive can be used with Maquet Sensor Drive after installing an update.



### Technical data

Maximum speed	3 km/h
Braking distance	< 800 mm with a 250 kg load
L x W x H (including handle)	277 mm x 136 mm x 72 mm
Article number	100969A0 Maquet Sensor Drive, EU-version
Operating time	Battery capacity for approximately 2.5 hours of continuous operation
Charging	Via standard charging station of the remote control
OR table compatibility	Maquet Alphamaxx (113322) mobile OR table with autodrive. Maquet Meera (720001) mobile OR table with autodrive. Maquet Yuno II.

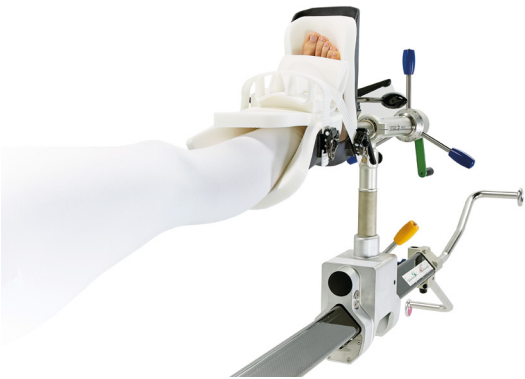
# Leg Supports

Stable & hygienic accessories for orthopaedic & trauma surgeries

Surgical site infections contribute to approximately one-third of the costs associated with hospital-acquired infections (HAI).<sup>1</sup> By reducing the risk of cross-contamination in the operating room, hospitals can improve patient safety and limit the costs of extended care.\*



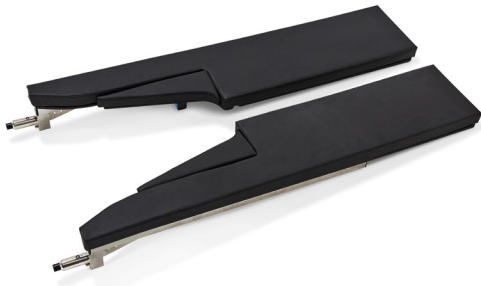
**Stability during traction:** Specifically designed for surgeries where strong traction forces are applied through the patient's foot, such as femur repositioning or hip replacements.



**Easy to set-up and use:** The traction boot can be easily attached from above or beside by using a universal interface, without requiring the use of any additional tools or accessories.



**Hygienic inlay:** The design of the traction boot includes an easy-to-clean smooth metal frame and a hygienic disposable or reuseable inlay to help minimise the risk of cross-contamination.



**Pre & post surgery set-up:** The simple design of the leg plates assists with the pre & post surgery setup and comfort, as well as staff manual handling.

\*[https://cddep.org/tool/overall\\_and\\_unit\\_costs\\_five\\_most\\_common\\_hospital\\_acquired\\_infections\\_hais\\_us/](https://cddep.org/tool/overall_and_unit_costs_five_most_common_hospital_acquired_infections_hais_us/)

# Accessories for Yuno II

## General Accessories



- 100240A0**  
**Pin-joint arm for body supports**
- Flexible positioning using 3 joints
  - Quick locking using central handle screw
  - Stable

**Technical information**

For mounting of body supports 100211X0 and 100297A0

Can be mounted to a side rail

Standard clamp may be ordered separately



- 100219C0**  
**Fixture for body supports**
- Adjustment options for height and length
  - Can be swivelled horizontally

**Technical information**

Width x height: 90 x 340 mm

Length: 280 – 380 mm

Including: standard clamp

For mounting body supports 100211X0 and 100297A0

Can be mounted to a side rail



- 100211A0**  
**Back/buttocks support**
- Flexible positioning of the pad
  - Pad can be rotated on the adapter

**Technical information**

Pad width x length: 120 x 170 mm

Material of pad: PUR

**Combination with**

- fixture for body supports 100219C0
- pin-joint arm 100240A0



- 100211C0**  
**Lateral support**
- Flexible positioning of the pad
  - Pad can be rotated on the adapter
  - Pressure distribution thanks to slightly concave shape

**Technical information**

Pad width x length : 100 x 210 mm

Material of pad: PUR

**Combination with**

- fixture for body supports 100219C0
- pin-joint arm 100240A0



- 100969A0**  
**Sensor Drive**
- Wireless control unit for OR tables with Autodrive function
  - Precise speed regulation using the throttle grip
  - Easy movement of the OR table
  - Forward and backward motion is possible

**Technical information**

Maximum speed: 3 km/h

Can be mounted to a side rail

**Recommended combination with**

- charging units 100970A0 or 100971A0/B0

**Suitable for use with**

- tables with Autodrive function
- 113322B5, 720001B2, 143302B0



- 100491A0**  
**Side rail extension**
- For mounting side rail accessories

**Technical information**

Length: 490 mm

EU side rail

Can be mounted to a side rail

1 standard clamp integrated

**Available versions**

- 100491A0 Euro Rail
- 100491C0 US Rail



- 100154A0**  
**Side rail extension**
- Side rail extension with two integrated standard clamps

**Technical information**

Length: 690 mm

EU side rail

Can be mounted to a side rail

2 standard clamps integrated

**Recommended combination with**

- OR table top 115020

**Can be combined with**

- X-ray protection 11016917

# Accessories for Yuno II

## Head rests



**100210A0**  
Adjustable head rest adapter

- For mounting standard head rests and horseshoe head rests
- Stable
- Flexible and easy adjustment by using 3 joints
- Quick locking with only one central handle screw

**Technical information**

Safety lever to prevent unintentional pull-out from interface

**Only for use in combination with**

- CF back plate for shoulder surgery 143334AC



**116053BC**  
Head rest

- Head rest can be inclined and raised
- Colour-coded adjustment levers
- IPC pad with integrated base plate – Velcro®-free fixation – available
- Side rails mounted on each outside edge
- Controlled adjustment via braking mechanism
- Fitted with cassette holder for X-ray cassette slide (100293A0)
- Easy mounting with Easy Click technology

**Technical information**

Large adjustment angle: +84°/-60°

Mounting to a pin mounting point

EU side rail

**Suitable for use with**

- 116010/30
- mobile OR tables 111806, 111810, 113322, 1433, 7000, 7100, 7200

**Available versions:**

- 116053AC with IPC padding
- 116053BC with SFC padding



**100215A0**  
Head support for shoulder operations

- Side elements can be folded down
- Can be used for a variety of head circumferences
- Stable fixation of the head
- Fixation of straps using Easy Click technology

**Technical information**

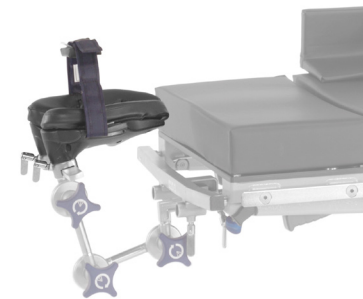
Including: 2 fixture straps

Soft pads are fixed with Velcro® and can be replaced

Mounting to the side rail mounting point

**Recommended combination with**

- shoulder plates



**100272A0**  
Horseshoe head rest – two-section

- Width of the two sections can be adjusted
- Can be used in prone and supine positions
- 2 seamless SFC pads

**Technical information**

Width x height x length :  
230 x 120 x 260 mm  
(total width of two sections)

Including: 1 fastening strap  
incl. forehead pad

Material of pad: SFC

Mounting to fixture (e.g. 100265A0)  
or head rest adapter with a side rail

# Accessories for Yuno II

## Arm Support



**116064AC**  
Head rest

- Head rest with inclination
- Colour-coded adjustment levers
- IPC pad with integrated base plate – Velcro®-free fixation – available
- Side rail mounted on each outside edge
- Fitted with cassette holder for X-ray cassette slide (100293A0)
- Easy mounting with Easy Click technology
- 116064AC suitable for mechanical cleaning

**Technical information**

Adjustment angle: + 84° / - 60°

Mounting to a pin mounting point

EU side rail

**Suitable for use with**

- 116010/30
- mobile OR tables 113322, 1433, 7000, 7100, 7200

**Available versions:**

- 116064AC with IPC padding
- 116064BC with SFC padding



**100230A0**  
Trimano Fortis

- Support arm can be used in various surgical disciplines
- Simple to operate with the Click and Move system
- 6 joints are simultaneously released by pressing the lever
- Flexible positioning also during the operation
- Easy mounting of accessories
- Immediately ready for use without power supply or additional compressed air connection

**Technical information**

Sterile cover sets available

Can be mounted to a side rail

**Combination with**

- adapter Trimano Fortis 100231A0
- arm support 100232A0



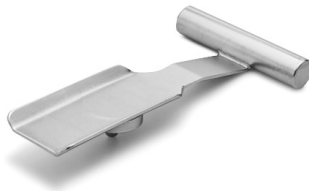


**100232A0**  
**Arm support**

- Accessory for Trimano Fortis
- Easy mounting with Easy Click technology
- Secure positioning of the arm

**Technical information**

Material of pad: SFC



**100243A0**  
**Arm rest for lateral position**

- Accessory for Trimano Support Arm
- For lateral position

**Technical information**

Length: 270 mm

Material: steel

Can be sterilized

**Only in conjunction with**

- adapter 100242A0 for Trimano 100241A0
- adapter Trimano Fortis 100231A0 for Trimano 100230A0
- sterile set 100244A0



**100163A0**  
**Multipurpose plate for arm surgery**

- Metal-free and radiolucent in the middle section
- Horizontal position of the hand operating table can also be maintained with Trendelenburg position
- Support bar can be mounted on both sides of the table end
- Additional accessories may be mounted on the side rail
- Radiolucency from finger tip to finger tip when using two hand operating tables in combination with a carbon-fibre table top and adapter 100164X0

**Technical information**

Width x length: 380 x 845 mm

Height adjustment of support bar: 700 – 1,160 mm

Comprises: multipurpose plate, 1 support bar 31151069, 1 T-adapter

EU side rail

Mounting to a side rail with radial setting clamp

**Clamp may be ordered separately:**

- 100322C0
- 100323C0
- 100361A0

**Recommended combination with**

- adapter for carbon-fibre table top 100164X0



**100252A0**  
**Disposable arm rest**

- Accessory for Trimano 3D and Trimano Fortis
- Light and secure fixation of the arm during surgery
- For single use

**Technical information**

Comprises: disposable arm rest, bandage, sterile cover

Set of 6



**100231A0**  
**Adapter Trimano Fortis**

- Adapter for mounting accessories to Trimano Fortis 100230A0
- Can be sterilized

**Technical information**

**Combination with**

- arm support 100243A0/B0
- elbow countertraction post 100245A0
- finger fixation 100248A0
- disposable sterile arm rest 100252A0

**Variant:**

- adapter 100242A0 for Trimano 3D (100241A0)



**100243B0**  
**Arm rest for beach chair position**

- Arm rest for Trimano Support Arm
- For supporting and securing the arm in beach chair position

**Technical information**

Length: 270 mm

Material: steel

Can be sterilized

**Only in conjunction with**

- adapter 100242A0 for Trimano 100241A0
- adapter Trimano Fortis 100231A0 for Trimano 100230A0
- sterile set 100244A0



**100720A0**  
**Trolley**

- For transportation and easy mounting of back plates for shoulder surgery
- Compact storage of back plates
- Attachment of a wire basket for storage of accessories possible

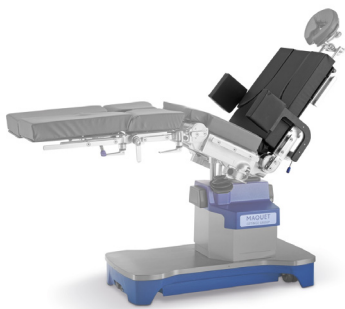
**Technical information**

Width x height x length: 835 x 725 x 735 mm

For accommodating shoulder plate 143334AC order retrofit kit 31023089

**Suitable for use with**

- shoulder plates 100718B0, 100719BC, 100721B0



- 143334AC**  
**Carbon-fibre back plate for shoulder operations**
- Removable shoulder modules enabling access to shoulder region
  - Side rails on shoulder modules can be removed
  - Lateral supports can be flexibly adapted to patient's width
  - Inclination adjustment via motorised mounting point
  - Simple mounting of arm supports by way of additional side rails

Technical information
Including: 2 lateral supports, 2 side rails
Material of pad: SFC
Transportation and storage possible on trolley 100720A0 with retrofit kit 31023089
EU side rail
Mounting to a pin mounting point
<b>Recommended combination with</b> <ul style="list-style-type: none"><li>• head rest adapter 100210A0</li><li>• head support 100215A0</li></ul>
<b>Suitable for use with</b> <ul style="list-style-type: none"><li>• 1131, 113221/22, 1133, 1433, 7200, 7100, 116010/30</li></ul>



- 100283A0**  
**Head rest that can be angled**
- Metal-free radiolucent
  - Easy mounting with Easy Click technology

Technical information
Width: 455 mm
Height: max. 155 mm
Length: max. 428 mm
Inclination: +90° / - 45°
Material of pad: SFC
Mounting to push-fit head rest mounting point
<b>Recommended combination with</b> <ul style="list-style-type: none"><li>• CF back plates 118037AC, 143333AC</li><li>• carbon-fiber insertable plates 143345BC, 116045BC</li></ul>
<b>Suitable for use with</b> <ul style="list-style-type: none"><li>• carbon-fiber table tops 118016A0/A1/A2/A3/A5</li></ul>



- 143333AC**  
**Carbon-fiber back plate**
- Radiolucent through a full 360°
  - Attachment of accessories for positioning of the head possible
  - Pressure distribution thanks to SFC padding
  - Easy mounting with Easy Click technology

Technical information
Width x length: 530 x 495 mm
Material of pad: SFC
Screw-fitted and push-fit head rest mounting points for additional accessories, e.g. accessory adapter 600525A0 or skull clamp holder 100548B0
Mounting to a pin mounting point
<b>Suitable for use with</b> <ul style="list-style-type: none"><li>• 111806, 1131, 1132, 1133, 1433, 7200, 7100, 116010/30</li></ul>



- 100203A0**  
**Horseshoe head rest**
- For anatomically correct head support
  - Can be used in prone and supine positions
  - Metal-free radiolucent
  - Pressure relief thanks to extra soft gel padding
  - Individual adaptation to the patient's anatomy by using 3 rotating joints
  - Mounting to push-fit head rest mounting point

Technical information
<b>Combination with</b> <ul style="list-style-type: none"><li>• CF back plate 118037A0</li><li>• CF back plate 143333AC</li><li>• carbon-fiber insertable plates 116045BC and 143345BC</li></ul>
<b>Suitable for use with</b> <ul style="list-style-type: none"><li>• carbon-fiber table tops 118016A1/A2/A3/A5</li></ul>



# Carbon fibre plate for Maquet Yuno II

## Improving intra-operative imaging



**143345BC**  
**Carbon-fibre plate for insertion**

- Radiolucent through a full 360°
- Very long X-ray window depending on the version and attached head rests

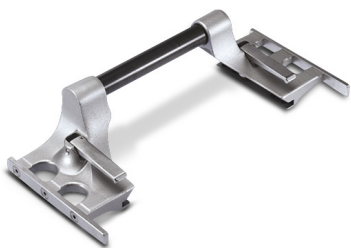
Technical information
Interface for insertion on 1433 of Yuno
With SFC pad
<b>Recommended combination with</b> <ul style="list-style-type: none"><li>• accessory trolley 100386A0</li></ul>
<b>Combination with</b> <ul style="list-style-type: none"><li>• adapter for CF plates 100164B0</li><li>• accessory adapter 118072A0</li></ul>
<b>Suitable for use with</b> <ul style="list-style-type: none"><li>• Yuno 143301/02</li></ul>
<b>Available versions:</b> <ul style="list-style-type: none"><li>• 143345AC insertable plate (long version), without head rest interface</li><li>• 143345BC insertable plate (short version), with head rest interfaces for screw-fitted and push-fit head rests</li></ul>



**100386A0**  
**Accessory trolley for carbon-fibre insertable plates**

- Accessory trolley for storage and transport of carbon-fibre clip-on plates and related pads

Technical information
4 double swivel castors, 2 castors with brakes
<b>Suitable for</b> <ul style="list-style-type: none"><li>• carbon-fibre plates for insertion</li><li>• 143345AC/BC for Yuno II</li><li>• 116045AC/BC for 116010/30 table tops</li></ul>



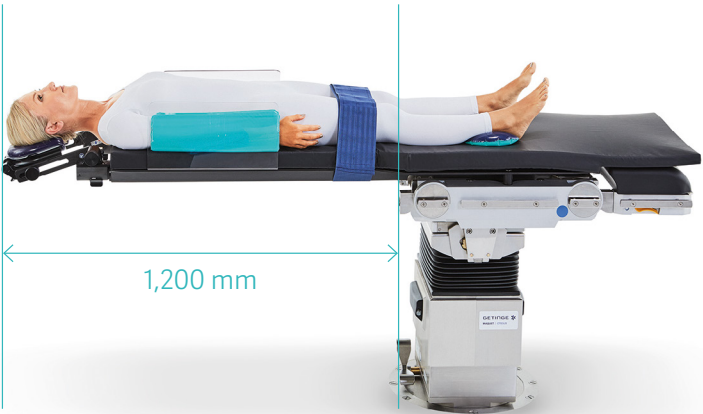
**118072X0**  
**Accessory adapter**

- For mounting accessories to carbon-fibre plates
- Multipurpose plate 118045A0
- Table tops 118016X0
- Radiolucent CF bar in the middle segment

Technical information
Length of side rail: 200 mm
EU side rail
<b>Available versions:</b> <ul style="list-style-type: none"><li>• 118072A0 suitable for 118016A1, A2, A3, A5, CF plates 118045AC, insertable CF plates 116045XC, 143345XC</li><li>• 118072B0 suitable for transfer table top 118012A0</li></ul>

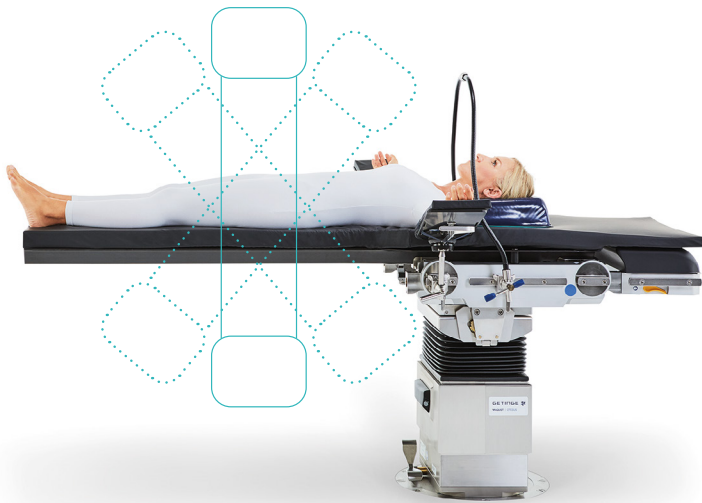
### Optimal positioning for spine and vascular surgeries

The X-ray window can be enlarged up to 1,200 mm by attaching an additional radiolucent head rest to the short version of the CF plate.



### Precise positioning for pelvic surgeries with Maquet Otesus

The length of the 116045AC plate combined with the longitudinal shift of Maquet Otesus enables imaging from many angles. This creates a maximum distance between the surgical site and the table column to improve radiological access during pelvic procedures.

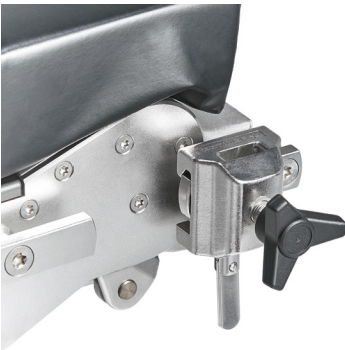


### Possible imaging windows

	CF-Mounting plate (long) – 116045AC	CF-Mounting plate (short) – 116045BC	CF-Mounting plate (long) – 143345AC	CF-Mounting plate (short) – 143345BC
Length (total)	1,810 mm	1,520 mm	1,850 mm	1,520 mm
X-ray window (plate only)	1,200 mm	900 mm	1,200 mm	900 mm
X-ray window (with additional equipment)	n/a	1,200 mm	n/a	1,200 mm

# Cross-discipline accessories

## Leg positioning



**100324A0**  
Clamp with blade interface

- For mounting accessories to the side rail
- Especially for mounting accessories with blade interface
- Enabling close rotation point of the leg holder to the hip joint

Technical information
Width x length x height: 60 x 85 x 130 mm
Maximum load: 49.2 kg



**100742AC**  
Pair of leg plates

- Pre- and post-operative positioning comfort for the patient
- Enable working comfort for medical staff during pre- and post-operative period
- Removable filler pieces enable easy adaptation to 1-hole and 3-hole CF plate

Technical information
Length: 1,320 mm
Material of pad: SFC
Mounting to a pin mounting point
<b>Recommended combination with</b> <ul style="list-style-type: none"><li>• carbon-fibre extension plate 143366AC/BC</li></ul>
<b>Suitable for use with</b> <ul style="list-style-type: none"><li>• 143302</li></ul>



**113358BC**  
Leg plate

- One-piece leg plate
- Pressure distribution thanks to SFC padding
- Quick and easy to mount

Technical information
Material of pad: SFC
EU side rail
Mounting to a pin mounting point
<b>Suitable for use with</b> <ul style="list-style-type: none"><li>• 111806, 111810</li><li>• 1131, 1132, 1133</li><li>• 1433</li><li>• 7000, 7100, 7200</li><li>• 116010/30</li></ul>

# Accessories for Yuno II

## Orthopedics and traumatology



**143366AC**  
Carbon-fibre extension plate with 3 holes

- Radiolucent through 360°
- Access to pelvis thanks to variable positioning of the countertraction post

Technical information
Material: carbon fibre
With SFC pad
Mounting to interface for insertion
<b>Suitable for use with</b> <ul style="list-style-type: none"><li>• 1433</li></ul>



**143366BC**  
Carbon-fibre extension plate with 1 hole

- Radiolucent through 360°
- Pressure distribution thanks to SFC padding

Technical information
Material: carbon fibre
With SFC pad
Mounting to interface for insertion
<b>Suitable for use with</b> <ul style="list-style-type: none"><li>• 1433</li></ul>



**100740A0**  
Traction bar with ball joint

- For hip arthroscopy and minimally invasive hip procedures
- For femur fractures
- Adjustment of bar: horizontally and vertically
- Can be adapted to the length of the patient's leg by sliding the sled
- Carbon-fibre bar is radiolucent

Technical information
Length: 2,471 mm
Material of bar: carbon-fibre
<b>Recommended combination with</b> <ul style="list-style-type: none"><li>• screw tension device 100743A0</li><li>• accessory trolley for traction bars 100747A0</li></ul>
<b>Suitable for</b> <ul style="list-style-type: none"><li>• Yuno II 143302</li></ul>





**100741A0**  
**Traction bar**

- For hip arthroscopy and femur fractures
- Adjustment of bar: horizontally
- Can be adapted to the length of the patient's leg by sliding the sled
- Carbon-fibre bar is radiolucent

**Technical information**

Length: 2,454 mm

Material: carbon fibre

**Recommended combination with**

- screw tension device 100743A0
- vertical adjustment 100751X0
- screw tension device 10037300
- accessory trolley for traction bars 100747A0

**Suitable for**

- Yuno II 143302



**100746A0**  
**Trolley for traction bar**

- For storage and transportation
- Enables easy mounting of traction bars to Yuno II

**Technical information**

Comprises: 1 trolley

**Only in combination with**

- traction bars 100740A0 and 100741A0



**100744A0**  
**Sliding clamp with side rail**

- The side rail of the clamp can be used to mount accessories to a traction bar

**Technical information**

EU side rail

**Suitable for**

- traction bars 100740A0 and 100741A0



**100747A0**  
**Accessory trolley**

- Space-saving storage and transportation of accessories for Yuno II

**Technical information**

Width x height x depth:  
750 x 1,450 x 820 mm

4 double swivel castors,  
2 with brakes

**Suitable for**

- Yuno II accessories



**100485B0**  
**Countertraction post for femur**

- For positioning the patient's thigh during traction in lateral position
- Radiolucent curved perinial support
- Perinial arc is height-adjustable using the hand crank

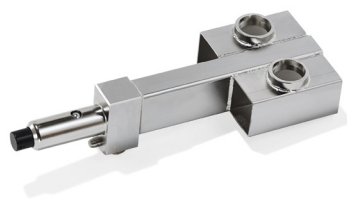
**Technical information**

Comprises: 1 countertraction post for femur and 1 extension plate

Mounting to lateral square mount

**Suitable for use with**

- 115020
- extension devices 141901X0, 115059AC, 116059, 118019A0
- table top for extension 143341XC
- adapter clamp 100750AC



**100750AC**  
**Adapter clamp**

- Easy to mount
- For combination with additional accessories
- Lateral positioning of the patient during femur treatment is possible

**Technical information**

Suitable for Yuno II

**Only in conjunction with**

- extension plates 143366BC (1 hole) and 143366AC (3 holes)
- femur countertraction post 100485X0



**143367A0**  
**Tibia adapter**

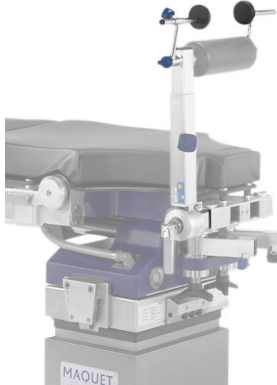
- For mounting the countertraction post for tibia and fibula 1003.50X0

**Technical information**

Including: SFC padding suitable for extension plate with 1 hole

**Only in conjunction with**

- CF extension plates 143366AC/BC



**100493B0**  
**Condyle fixation**

- For exact fixation of the knee
- Individually adjustable thanks to asymmetrical lateral discs

**Technical information**

Comprises: 2 pieces

Material of Pad: PUR

**Only in conjunction with**

- countertraction post
- for tibia and fibula 100350X0



**100350C0**  
**Countertraction post for tibia and fibula**

- For positioning and securing the leg in the event of calf fractures
- Easy repositioning of the bone using the height and inclination adjustment of the padded roll
- Radiolucent in the padded roll region

**Technical information**

Interface: extension table top

Including: 1 padded roll

Material of pad: PUR

**Suitable for use with**

- 115020
- extension devices 141901X0, 115059AC, 118019A0
- adapter plate for traction 143341AC
- support plate for extension 116059AC

**Available versions:**

- 100350A0 with horizontal guide (50 x 50 mm) for telescopic bar with 40 mm clear inner dimension
- 100350C0 with horizontal guide (40 x 40 mm) for telescopic bar with 35 mm clear inner dimension



**100752A0**  
**Bar extension**

- To lengthen traction bar 100740A0

**Technical information**

Width x height: 248 x 278 mm

**Combination with**

- traction bar 100740A0 only



**100751B0**  
**Vertical adjustment, short**

- For accommodation and vertical adjustment of a screw tension device
- For femoral fractures
- Easy to mount

**Technical information**

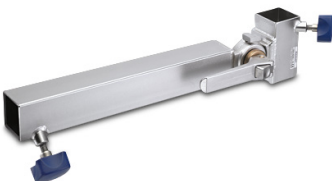
Length: 500 mm

**Only in conjunction with**

- screw tension device 100743A0

**Recommended combination with**

- traction bar 100741A0



**100442B0**  
**Joint-supporting arm**

- For mounting a telescopic bar and a screw tension device, supporting the execution of traction
- Precise setting thanks to horizontal bar that can be angled

**Technical information**

**Only in conjunction with**

- countertraction post for tibia and fibula 100350C0

**Available versions**

- 100442B0 for combination with telescopic bar 35 mm
- 100442A0 for combination with telescopic bar 40 mm



**100751A0**  
**Vertical adjustment, long**

- For accommodation and vertical adjustment of a screw tension device
- For hip arthroscopy and femoral fractures
- Easy to mount

**Technical information**

Length: 800 mm

**Only in conjunction with**

- screw tension device 100743A0

**Recommended combination with**

- traction bar 100741A0
- traction bar 100359V0



**100749A0**  
**Extension frame**

- For holding a patient's leg in lateral and prone position
- Flexible positioning of the leg possible thanks to the adjustment range
- Easy to mount

**Technical information**

Comprises: 1 horizontal and 1 vertical bar

**Only in conjunction with**

- screw tension devices 10033700 and 100743A0

**Recommended combination with**

- foot plate 100197A0
- traction stirrup clamp with rotation 100335A0



**100745A0**  
**Support plate**

- To support the patient's leg
- Can be mounted to the sliding clamp 100744A0 using a clamp (e.g. 100323C0)

**Technical information**

Plate width x length: 252 x 290

Height adjustment: 465 mm

Material of pad: SFC

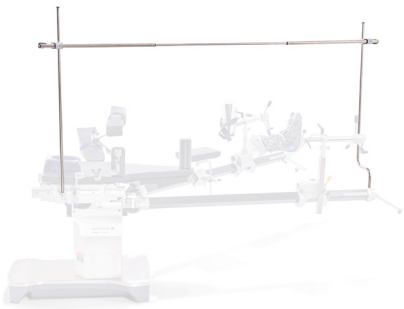
**Recommended combination with**

- sliding clamp 100744A0 and a standard or radial setting clamp

**Suitable for use with**

- 143302





**100748A0**  
**Frame for sterile drape**

- For holding sterile drape coverage
- Easy mounting to OR table
- Length of the horizontal bar is adjustable

**Technical information**

Comprises: 2 vertical bars and 1 horizontal bar

Adjustment range of horizontal bar: 1,500 – 2,800 mm

1 setting clamp may be ordered separately

**Combination with**

- traction bars 100740/41A0
- traction devices and orthopaedic table tops possible



**100376A0**  
**Disposable inlay and mounting brackets**

- Inlay for traction boot
- Skin-friendly material

**Technical information**

Comprises: 1 pack of 10 inlays, each with 2 brackets

**Suitable for use with**

- traction boot 100375A0 only



**100743A0**  
**Screw tension device**

- Execution of fine traction using a hand crank
- Adjustment of the leg by a ball and socket joint
- Precise setting of the leg using integrated rotation and tilt function
- Scale for orientation while using the rotating function
- Ergonomic rotation possible thanks to star handle design
- Free rotation possible

**Technical information**

**Recommended combination with**

- traction bars 100740A0 and 100741A0 in combination with vertical adjustment 100751A0/B0
- accessories to accommodate the foot e.g. traction boot 100375A0 or foot plate 100197A0



**100377A0**  
**Reusable inlay**

- Reusable inlay for traction boot
- 2 mounting brackets
- Skin-friendly material

**Technical information**

Set of 2

**Combination with**

- disposable mounting brackets 100377A0

**Suitable for use with**

- traction boot 100375A0 only



**100375A0**  
**Traction boot**

- Traction boot for positioning and securing of foot and calf during orthopaedic procedures
- Shell is extremely robust
- 2 handles on each side for easy adjustment

**Technical information**

Comprises: 1 traction boot, 1 pack of 10 disposable inlays and brackets 100376A0

Mounting to the side rail mounting point

**Recommended combination with**

- screw tension device 10033700, 100743A0
- foot plate mount 100349B0



**100378A0**  
**Disposable mounting brackets**

- Stabilises the patient's foot
- Quick and easy to mount

**Technical information**

Comprises: 1 pack containing 15 pairs of brackets

**Recommended combination with**

- reusable inlay 100377A0

**Suitable for use with**

- traction boot 100375A0 only



**100197A0**  
**Foot plate**

- Secure fixation of the foot with hook and loop fastener via Velcro® straps
- Can be adapted to the width of the foot
- Pad to protect the heel

**Technical information**

Set of 2

Spare part: strap 93000943, rubber lining 90102444, heel pad 90102454

**Recommended combination with**

- rotating and tilting clamp 100334A0
- screw tension device 10033700
- foot plate mount 100349B0
- screw tension device 100743A0

# Accessories for Yuno II

## Positioning aids



**100024A0**  
**Padded roll for countertraction post**

- To pad a countertraction post for positioning the patient

Technical information
Ø (external) 180 mm
Height: 190 mm
<b>Combination with</b> <ul style="list-style-type: none"><li>• countertraction post, e.g. 100490X0</li></ul>



**100902C0**  
**Meniscus positioning device**

- Flexible positioning of the leg using the radial setting clamp
- Radiolucent padded roll

Technical information
Width: 367 mm
Overall height: 600 mm
Can be mounted to a side rail
Radial setting clamp 100323C0 may be ordered separately



**100165A0**  
**Leg holder**

- To position and support the leg in lithotomy position
- Goepel version
- Positioning comfort enabled by sufficient positioning space and appropriate geometry
- Adjustment of calf plate via ball joint

Technical information
Comprises: 1 leg holder, 1 support strap
Inlay: SFC padding
Spare part: strap 31012754, pad 90934593
Can be mounted to a side rail with a clamp
Radial setting clamp (100323C0) may be ordered separately



**143342A0**  
**Femur hook**

- To hold the thigh bone for minimally invasive hip procedures
- Anatomical design

Technical information
Comprises: femur hook (left and right), 1 support arm, 1 clamp with square mount
Material: stainless steel
All components can be sterilized
Mounting to a side rail
<b>Suitable for use with</b> <ul style="list-style-type: none"><li>• 143301 and 143302</li></ul>

# Accessories for Yuno II

## Medical furniture for the operating room



**446498A0**  
**Mayo instruments table**

- Instrument table designed to hold sterile goods containers, instrument trays, instruments, swabs and other small items required for the operation
- Vacuum-formed seamless shelf
- Convenient height adjustment via foot pedal

Technical information
Hydraulic height adjustment: 990 – 1,355 mm
Max. load: 30 kg
3 double swivel castors (Ø 75 mm)
<b>Available versions:</b> <ul style="list-style-type: none"><li>• 446498A0, shelf dimension: 600 x 400 mm</li><li>• 446498B0, shelf dimension: 700 x 500 mm</li></ul>



**440532X3**  
**Instrument table**

- Hygienic accessory table with 2 removable shelves
- Easy to manoeuvre in the OR
- Finely polished and dirt-repellent surface

Technical information
Shelf dimension width x length: 720 x 625 mm
2 removable shelves
Max. load per shelf: 20 kg
4 double swivel castors, 2 of which with brakes
<b>Available versions:</b> <ul style="list-style-type: none"><li>• 440532A3, height 800 mm, spacing between shelves: 500 mm</li><li>• 440532B3, height 900 mm, spacing between shelves: 600 mm</li><li>• 440532C3, height 1,000 mm, spacing between shelves: 700 mm</li></ul>





49069003  
OR step stool

- OR step stool for better access to the surgical field
- 1 step with slip-proof ridged tread

Technical information

Dimensions width x length:  
603 x 350 mm

Max. load: 125 kg

Material: CrNi steel

Step seamlessly welded

Electrostatically conductive  
rubber feet

Available versions:

- 49069003, height: 130 mm
- 49069103, height: 220 mm



463401A0  
OR swivel stool hydraulic

- Mobile swivel stool for flexible use in the operating theatre
- Round padded seat
- Covered castors
- Central brake system
- Foot pedal for convenient height-adjustment

Technical information

Hydraulic height-adjustment:  
600 – 840 mm

Padded seat: Ø 350 mm, black

Pad thickness: 100 mm

Max. load: 200 kg

5 double castors (Ø 50 mm)

Electrically conductive

Available versions:

- 463401A0 without back rest
- 463401C0 with padded back rest

# Technical specifications

Technical information

Max. overall load 454 kg / 1,000 lbs

Operating table weight 400 kg

Complies with CE requirements as per 93/42 EU Medical Device Directive, UL approved

Adjustment options using corded or IR remote controls

Height without padding 670–1,270 mm ± 30 mm

Trendelenburg /  
Reverse Trendelenburg 43° ± 2°

Lateral tilt 23° ± 2°

Lateral tilt  
with attached extension bars 15° ± 2°

Lower back plate +90° / -90°

Leg plates (individually or  
synchronously adjustable) +90° / -90°

0-position (horizontal position possible for entire table top  
or for leg plates only)

Manual movements

Traction bars – Leg abduction (outside) 45°

Traction bars – Leg adduction (inside) 45°

Traction bars (up) 15°

Traction bars (down) 30°

“Lock”/“Unlock” settings  
(prevent/enable movement of table)

Versions of Maquet Yuno II

143302B0 EU version

143302F0 US version

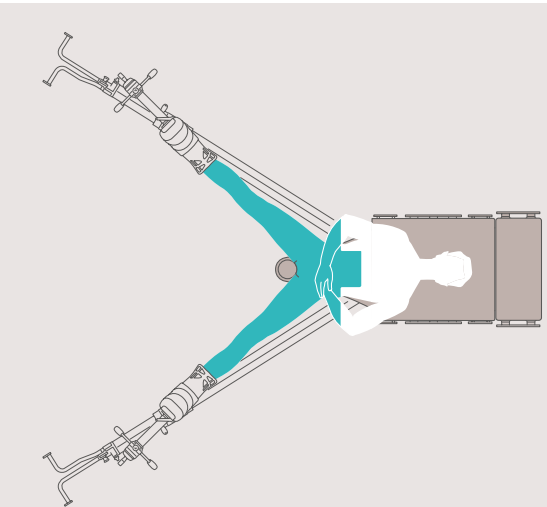
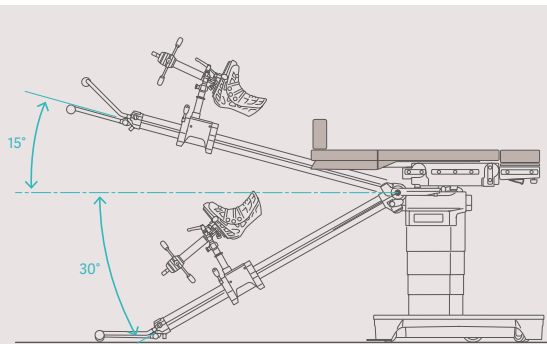
Optional control elements

143390A0 Corded hand control

143391A0 IR hand control

100970A0 Mobile charging station  
for IR hand control

100971A0/B0 Stationary charging station  
for IR hand control



# Ongoing Support & Service

Now benefit from a long-term partnership with Getinge Care



Getinge has a long and proud history of designing and developing world-leading lifesaving equipment. In line with our quality and operability of our equipment we also support our customers by providing support through our service department.

Our highly trained Field Service Engineers are available to ensure your equipment is maintained to maximum availability and longevity from your investment.

We believe in the philosophy of partnering with our customers to understand your operating needs and requirements. This allows us to support you doing important things like caring for your patients.

With our Getinge Care service we are able to tailor service support to meet your environment and operating constraints. Our Field Service Engineers have extensive experience in the medical field and are able to work in with your caseloads, facility standard operating procedures and environmental constraints.

To ensure you are able to meet the needs of your patients we are also able to provide bio-medical training to your internal bio-medical engineers to have the ability to maintain your equipment independently and escalate when further support is needed.



### Preventative

Partner Preventative Maintenance labour and parts from a product specific service schedule: the intention of Preventative Maintenance is to help avoid unexpected expenses by identifying problems before they become actual or critical.



### Comprehensive

With one set payment, the Comprehensive package gives you full financial control over your investment. This package includes all Preventative Maintenance parts and labour as well as all Corrective Maintenance parts and labour.



### Partner

Getinge will train your in-house engineering team on how to conduct the manufacturer's recommended diagnostics test. This allows the flexibility to reduce cost and minimise downtime with your own on-site team. Our Partner package includes nominated Preventative Maintenance and Corrective parts.

# Taking care of your investment

## Getinge Care Technical Services

We offer services to maximise the useful life and long-term value of your Getinge equipment.

With a Getinge Care service agreement, you will get preventive maintenance, original spare parts, easy troubleshooting and proactive service by our certified field service reps – ensuring that your equipment is operating safely and reliable all the time.

### The importance of ensuring uptime

Optimising your Getinge equipment performance is a central part of hospital efficiency. Each day, your staff relies on our equipment to deliver operational stability and exceptional care for their patients, so they can focus on saving lives. A Getinge Care service agreement can help to increase uptime and keep unplanned costs to a minimum.

### Protecting performance

By following an optimal preventive maintenance schedule, you will ensure that you always have the right equipment at the right time. If something should need urgent attention, we will be there to help resolve the issue.



### Expert service

As original manufacturer we aim to deliver the best possible maintenance, repair and product updates.

### Digital services

As an optional additional part of your Getinge Care service agreement, we offer access to our digital services allowing for new insights, maximised uptime and improved efficiency.

### Peace of mind

As your services partner, we will work together to find the best technical services solution for your needs, and support you if any issues arise.





With a firm belief that every person and community should have access to the best possible care, Getinge provides hospitals and life science institutions with products and solutions aiming to improve clinical results and optimise workflows. The offering includes products and solutions for intensive care, cardiovascular procedures, operating rooms, sterile reprocessing and life science. Getinge employs over 10,700 people worldwide and the products are sold in more than 130 countries.

© 2023 Getinge Australia Pty Ltd ABN 67 009 673 518

**Australian Phone:** 1800 438 464 **Email:** [sales.au@getinge.com](mailto:sales.au@getinge.com)

**New Zealand Phone:** 0800 1 438 464 **Email:** [sales.nz@getinge.com](mailto:sales.nz@getinge.com)

[www.getinge.com/anz](http://www.getinge.com/anz)

ANZ\_SWP\_V1\_005\_1222  
EXP 04/26