



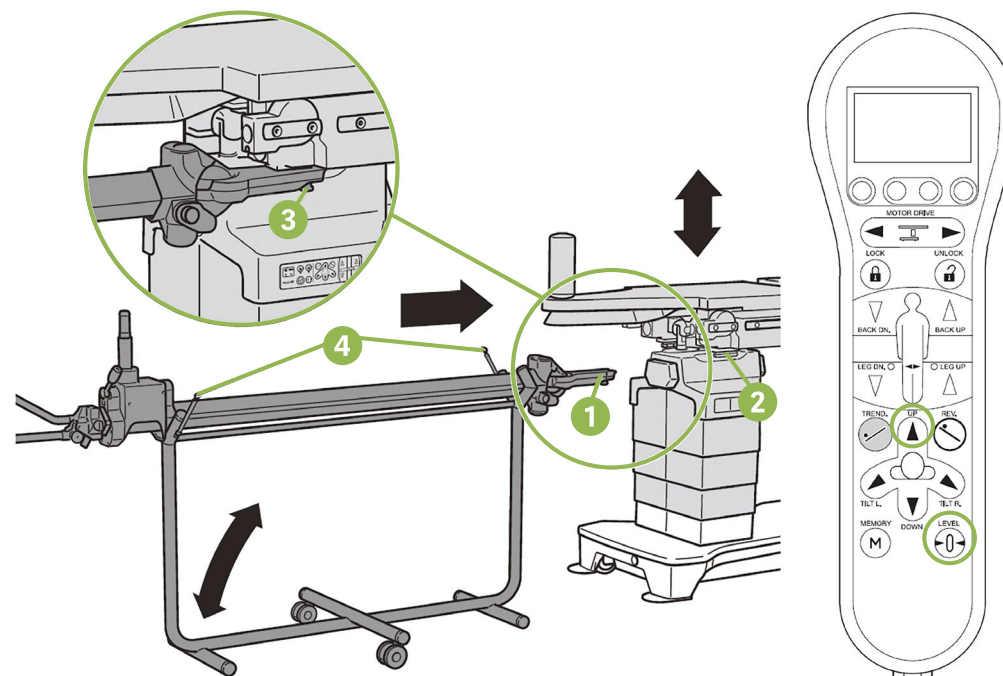
How to attach Carbon Bars

Mounting the traction bar (1007.40A0)

Prerequisites:

- The OR table is locked (LOCK).
- OR table is neither inclined nor tilted laterally.
- The extension plate is mounted to the OR table.

1. Simultaneously press and hold the buttons [LEVEL]  + [UP]  on the control device.
 - The OR table is adjusted to the appropriate height to mount the traction bar.
2. Move the traction bar on the bar trolley with the mounting point guide **1** at the front, to the desired mounting point **2** of the OR table.
3. Insert the mounting point guide of the traction bar completely onto the mounting point of the OR table without tilting.
 - The traction bar engages audibly at two lock-in positions.
 - Locking bolt is engaged **3**.
 - The traction bar is locked.
4. Check the firm seating by pulling the traction bar.
5. Release both securing straps **4** on the bar trolley.
 - The traction bar can be lifted from the bar trolley.



Scan for more
Yuno II Tips & Tricks

© 2023 Getinge Australia Pty Ltd ABN 67 009 673 518

Australian Phone: 1800 438 464 Email: sales.au@getinge.com

New Zealand Phone: 0800 1 438 464 Email: sales.nz@getinge.com

www.getinge.com/anz

ANZ_SWP_V1_057_0823
EXP 08/26